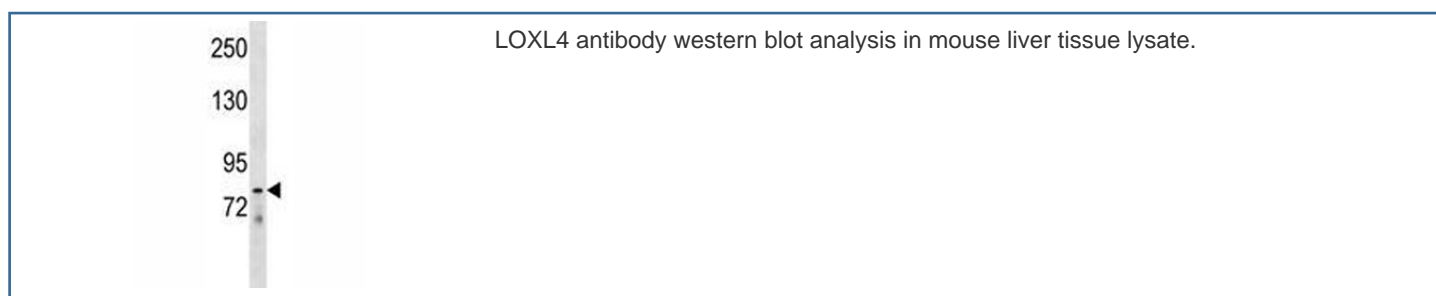


## LOXL4 Antibody (F45468)

Catalog No.	Formulation	Size
F45468-0.4ML	In 1X PBS, pH 7.4, with 0.09% sodium azide	0.4 ml
F45468-0.08ML	In 1X PBS, pH 7.4, with 0.09% sodium azide	0.08 ml

[Bulk quote request](#)

<b>Availability</b>	1-3 business days
<b>Species Reactivity</b>	Human, Mouse
<b>Format</b>	Antigen affinity purified
<b>Host</b>	Rabbit
<b>Clonality</b>	Polyclonal (rabbit origin)
<b>Isotype</b>	Rabbit Ig
<b>Purity</b>	Antigen affinity
<b>UniProt</b>	Q96JB6
<b>Applications</b>	Western Blot : 1:1000
<b>Limitations</b>	This LOXL4 antibody is available for research use only.



## Description

This gene encodes a member of the lysyl oxidase gene family. The prototypic member of the family is essential to the biogenesis of connective tissue, encoding an extracellular copper-dependent amine oxidase that catalyses the first step in the formation of crosslinks in collagens and elastin. A highly conserved amino acid sequence at the C-terminus end appears to be sufficient for amine oxidase activity, suggesting that each family member may retain this function. The N-terminus is poorly conserved and may impart additional roles in developmental regulation, senescence, tumor suppression, cell growth control, and chemotaxis to each member of the family.

## Application Notes

Titration of the LOXL4 antibody may be required due to differences in protocols and secondary/substrate sensitivity.

## Immunogen

A portion of amino acids 575-603 from the human protein was used as the immunogen for this LOXL4 antibody.

## Storage

Aliquot the LOXL4 antibody and store frozen at -20oC or colder. Avoid repeated freeze-thaw cycles.