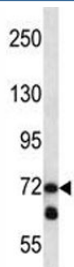


LOXL3 Antibody (F42503)

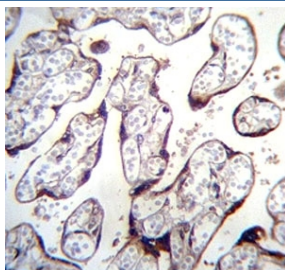
Catalog No.	Formulation	Size
F42503-0.4ML	In 1X PBS, pH 7.4, with 0.09% sodium azide	0.4 ml
F42503-0.08ML	In 1X PBS, pH 7.4, with 0.09% sodium azide	0.08 ml

[Bulk quote request](#)

Availability	1-3 business days
Species Reactivity	Human
Predicted Reactivity	Mouse
Format	Antigen affinity purified
Host	Rabbit
Clonality	Polyclonal (rabbit origin)
Isotype	Rabbit Ig
Purity	Antigen affinity
UniProt	P58215
Applications	Western Blot : 1:1000 IHC (Paraffin) : 1:10-1:50
Limitations	This LOXL3 antibody is available for research use only.



LOXL3 antibody western blot analysis in NCI-H292 lysate.



LOXL3 antibody immunohistochemistry analysis in formalin fixed and paraffin embedded human placenta tissue.

Description

This gene encodes a member of the lysyl oxidase gene family. The prototypic member of the family is essential to the biogenesis of connective tissue, encoding an extracellular copper-dependent amine oxidase that catalyses the first step in the formation of crosslinks in collagens and elastin. A highly conserved amino acid sequence at the C-terminus end appears to be sufficient for amine oxidase activity, suggesting that each family member may retain this function. The N-terminus is poorly conserved and may impart additional roles in developmental regulation, senescence, tumor suppression, cell growth control, and chemotaxis to each member of the family. Alternatively spliced transcript variants of this gene have been reported but their full-length nature has not been determined.

Application Notes

Titration of the LOXL3 antibody may be required due to differences in protocols and secondary/substrate sensitivity.

Immunogen

A portion of amino acids 715-744 from the human protein was used as the immunogen for this LOXL3 antibody.

Storage

Aliquot the LOXL3 antibody and store frozen at -20oC or colder. Avoid repeated freeze-thaw cycles.