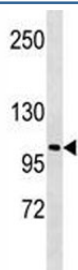


LOXL2 Antibody (F44528)

Catalog No.	Formulation	Size
F44528-0.4ML	In 1X PBS, pH 7.4, with 0.09% sodium azide	0.4 ml
F44528-0.08ML	In 1X PBS, pH 7.4, with 0.09% sodium azide	0.08 ml

[Bulk quote request](#)

Availability	1-3 business days
Species Reactivity	Human
Predicted Reactivity	Bovine, Chicken, Mouse, Rat
Format	Antigen affinity purified
Host	Rabbit
Clonality	Polyclonal (rabbit origin)
Isotype	Rabbit Ig
Purity	Antigen affinity
UniProt	Q9Y4K0
Applications	Western Blot : 1:1000
Limitations	This LOXL2 antibody is available for research use only.



LOXL2 antibody western blot analysis in A549 lysate. Predicted molecular weight ~87 kDa.

Description

This gene encodes a member of the lysyl oxidase gene family. The prototypic member of the family is essential to the biogenesis of connective tissue, encoding an extracellular copper-dependent amine oxidase that catalyses the first step in the formation of crosslinks in collagens and elastin. A highly conserved amino acid sequence at the C-terminus end appears to be sufficient for amine oxidase activity, suggesting that each family member may retain this function. The N-terminus is poorly conserved and may impart additional roles in developmental regulation, senescence, tumor

suppression, cell growth control, and chemotaxis to each member of the family.

Application Notes

Titration of the LOXL2 antibody may be required due to differences in protocols and secondary/substrate sensitivity.

Immunogen

A portion of amino acids 589-617 from the human protein was used as the immunogen for this LOXL2 antibody.

Storage

Aliquot the LOXL2 antibody and store frozen at -20oC or colder. Avoid repeated freeze-thaw cycles.