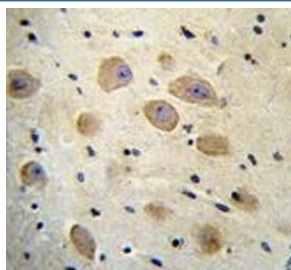


## LOC339742 Antibody (F40016)

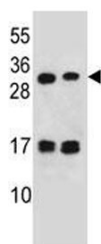
| Catalog No.   | Formulation                                | Size    |
|---------------|--------------------------------------------|---------|
| F40016-0.4ML  | In 1X PBS, pH 7.4, with 0.09% sodium azide | 0.4 ml  |
| F40016-0.08ML | In 1X PBS, pH 7.4, with 0.09% sodium azide | 0.08 ml |

[Bulk quote request](#)

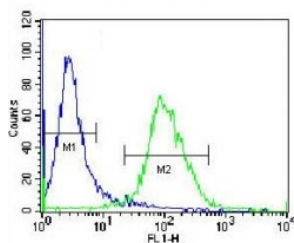
|                           |                                                                                   |
|---------------------------|-----------------------------------------------------------------------------------|
| <b>Availability</b>       | 1-3 business days                                                                 |
| <b>Species Reactivity</b> | Human                                                                             |
| <b>Format</b>             | Antigen affinity purified                                                         |
| <b>Host</b>               | Rabbit                                                                            |
| <b>Clonality</b>          | Polyclonal (rabbit origin)                                                        |
| <b>Isotype</b>            | Rabbit Ig                                                                         |
| <b>Purity</b>             | Antigen affinity                                                                  |
| <b>UniProt</b>            | Q86VD6                                                                            |
| <b>Applications</b>       | IHC (Paraffin) : 1:10-1:50<br>Western Blot : 1:1000<br>Flow Cytometry : 1:10-1:50 |
| <b>Limitations</b>        | This LOC339742 antibody is available for research use only.                       |



LOC339742 antibody analysis in formalin fixed and paraffin embedded human brain tissue.



LOC339742 antibody western blot analysis in 293, Jurkat lysate



LOC339742 antibody flow cytometric analysis of Jurkat cells (green) compared to a negative control cell (blue). FITC-conjugated donkey-anti-rabbit secondary Ab was used for the analysis.

## Description

The function of this protein remains unknown.

## Application Notes

Titration of the LOC339742 antibody may be required due to differences in protocols and secondary/substrate sensitivity.

## Immunogen

A portion of amino acids 147-176 from the human protein was used as the immunogen for this LOC339742 antibody.

## Storage

Aliquot the LOC339742 antibody and store frozen at -20oC or colder. Avoid repeated freeze-thaw cycles.