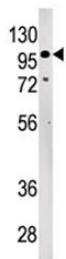


LLGL2 Antibody / HGL (F53918)

Catalog No.	Formulation	Size
F53918-0.4ML	In 1X PBS, pH 7.4, with 0.09% sodium azide	0.4 ml
F53918-0.08ML	In 1X PBS, pH 7.4, with 0.09% sodium azide	0.08 ml

[Bulk quote request](#)

Availability	1-3 business days
Species Reactivity	Human
Predicted Reactivity	Mouse
Format	Purified
Host	Rabbit
Clonality	Polyclonal (rabbit origin)
Isotype	Rabbit Ig
Purity	SAS precipitation followed by dialysis in PBS
UniProt	Q6P1M3
Applications	Western Blot : 1:500-1000
Limitations	This LLGL2 antibody is available for research use only.



Western blot testing of LLGL2 antibody and 293 cell lysate. Predicted molecular weight ~113 kDa.

Description

The lethal (2) giant larvae protein of *Drosophila* / Human giant larvae homolog plays a role in asymmetric cell division, epithelial cell polarity, and cell migration. LLGL2 is a protein similar to lethal (2) giant larvae of *Drosophila*. In fly, the protein's ability to localize cell fate determinants is regulated by the atypical protein kinase C (aPKC). In human, this protein interacts with aPKC-containing complexes and is cortically localized in mitotic cells.

Application Notes

Titration of the LLGL2 antibody may be required due to differences in protocols and secondary/substrate sensitivity.

Immunogen

A portion of amino acids 165-199 from the human protein was used as the immunogen for the LLGL2 antibody.

Storage

Aliquot the LLGL2 antibody and store frozen at -20oC or colder. Avoid repeated freeze-thaw cycles.