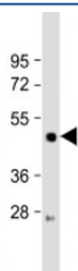


## LIPF Antibody / Gastric Lipase (F53884)

Catalog No.	Formulation	Size
F53884-0.2ML	In 1X PBS, pH 7.4, with 0.09% sodium azide	0.2 ml
F53884-0.05ML	In 1X PBS, pH 7.4, with 0.09% sodium azide	0.05 ml

[Bulk quote request](#)

<b>Availability</b>	1-3 business days
<b>Species Reactivity</b>	Human
<b>Format</b>	Antigen affinity purified
<b>Host</b>	Rabbit
<b>Clonality</b>	Polyclonal (rabbit origin)
<b>Isotype</b>	Rabbit Ig
<b>Purity</b>	Antigen affinity
<b>UniProt</b>	P07098
<b>Applications</b>	Western Blot : 1:1000-2000
<b>Limitations</b>	This LIPF antibody is available for research use only.



Western blot testing of AGS cell lysate with LIPF antibody at 1:2000. Predicted molecular weight: 45kDa

## Description

The LIPF gene encodes gastric lipase or Lipase F, an enzyme involved in the digestion of dietary triglycerides in the gastrointestinal tract, and responsible for 30% of fat digestion processes occurring in human. It is secreted by gastric chief cells in the fundic mucosa of the stomach, and it hydrolyzes the ester bonds of triglycerides under acidic pH conditions. The gene is a member of a conserved gene family of lipases that play distinct roles in neutral lipid metabolism. [RefSeq]

## Application Notes

Titration of the LIPF antibody may be required due to differences in protocols and secondary/substrate sensitivity.

## **Immunogen**

A portion of amino acids 243-276 from the human protein was used as the immunogen for the LIPF antibody.

## **Storage**

Aliquot the LIPF antibody and store frozen at -20oC or colder. Avoid repeated freeze-thaw cycles.