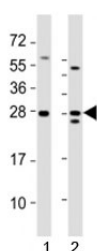


Lin28a Antibody (F53240)

Catalog No.	Formulation	Size
F53240-0.4ML	In 1X PBS, pH 7.4, with 0.09% sodium azide	0.4 ml
F53240-0.08ML	In 1X PBS, pH 7.4, with 0.09% sodium azide	0.08 ml

Bulk quote request

Availability	1-3 business days
Species Reactivity	Human, Mouse
Format	Antigen affinity purified
Clonality	Polyclonal (rabbit origin)
Isotype	Rabbit Ig
Purity	Antigen affinity
UniProt	Q8K3Y3
Applications	Western Blot : 1:1000-2000
Limitations	This Lin28a antibody is available for research use only.



Western blot testing of Lin28a antibody at 1:2000 dilution. Lane 1: mouse F9 lysate; 2: human NCCIT lysate; Predicted molecular weight ~ 23 kDa.

Description

Acts as a 'translational enhancer', driving specific mRNAs to polysomes and thus increasing the efficiency of protein synthesis. Its association with the translational machinery and target mRNAs results in an increased number of initiation events per molecule of mRNA and, indirectly, in stabilizing the mRNAs. Binds IGF2 mRNA, MYOD1 mRNA, ARBP/36B4 ribosomal protein mRNA and its own mRNA. Essential for skeletal muscle differentiation program through the translational up-regulation of IGF2 expression. Acts as a suppressor of microRNA (miRNA) biogenesis by specifically binding the precursor let-7 (pre-let-7), a miRNA precursor. Acts by binding pre-let-7 and recruiting ZCCHC11/TUT4 uridylyltransferase, leading to the terminal uridylation of pre- let-7. Uridylated pre-let-7 miRNAs fail to be processed by Dicer and undergo degradation. Degradation of pre-let-7 in embryonic stem (ES) cells contributes to the maintenance of

ES cells. In contrast, Lin28a down-regulation in neural stem cells by miR-125, allows the processing of pre-let-7. Specifically recognizes the 5'-GGAG-3' motif in the terminal loop of pre-let-7. Also recognizes and binds non pre-let-7 pre-miRNAs that contain the 5'- GGAG-3' motif in the terminal loop, leading to their terminal uridylation and subsequent degradation.

Application Notes

Titration of the Lin28a antibody may be required due to differences in protocols and secondary/substrate sensitivity.

Immunogen

This mouse Lin28a antibody was produced from a rabbit immunized with a KLH conjugated synthetic peptide between 177-210 amino acids from the C-terminal region of mouse Lin28a.

Storage

Aliquot the Lin28a antibody and store frozen at -20oC or colder. Avoid repeated freeze-thaw cycles.