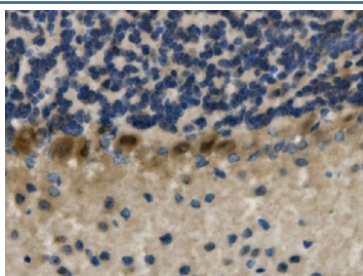


LIM-1 Antibody / LHX1 (RQ5985)

Catalog No.	Formulation	Size
RQ5985	0.5mg/ml if reconstituted with 0.2ml sterile DI water	100 ug

Bulk quote request

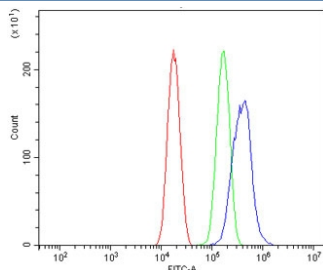
Availability	1-3 business days
Species Reactivity	Human, Mouse
Format	Antigen affinity purified
Host	Rabbit
Clonality	Polyclonal (rabbit origin)
Isotype	Rabbit IgG
Purity	Affinity purified
Buffer	Lyophilized from 1X PBS with 2% Trehalose and 0.025% sodium azide
UniProt	P48742
Localization	Nuclear
Applications	Western Blot : 0.5-1ug/ml Immunohistochemistry : 1-2ug/ml Flow Cytometry : 1-3ug/million cells Direct ELISA : 0.1-0.5ug/ml
Limitations	This LIM-1 antibody is available for research use only.



IHC staining of FFPE mouse brain with LIM-1 antibody. HIER: boil tissue sections in pH8 EDTA for 20 min and allow to cool before testing.

KDa
180-
130-
95-
72-
55-
43-
34-
26-
17-

Western blot testing of mouse brain lysate with LIM-1 antibody. Predicted molecular weight ~43 kDa.



Flow cytometry testing of human PC-3 cells with LIM-1 antibody at 1ug/million cells (blocked with goat sera); Red=cells alone, Green=isotype control, Blue= LIM-1 antibody.

Description

LIM homeobox 1 is a protein that in humans is encoded by the LHX1 gene. It is mapped to 17q12. This gene encodes a member of a large protein family which contains the LIM domain, a unique cysteine-rich zinc-binding domain. The encoded protein is a transcription factor important for the development of the renal and urogenital systems. This gene is a candidate for Mayer-Rokitansky-Kuster-Hauser syndrome, a disorder characterized by anomalies in the female genital tract.

Application Notes

Optimal dilution of the LIM-1 antibody should be determined by the researcher.

Immunogen

Recombinant human protein (amino acids M1-S317) was used as the immunogen for the LIM-1 antibody.

Storage

After reconstitution, the LIM-1 antibody can be stored for up to one month at 4oC. For long-term, aliquot and store at -20oC. Avoid repeated freezing and thawing.