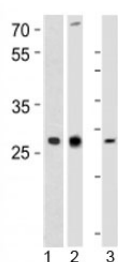


## LIF Antibody (F49998)

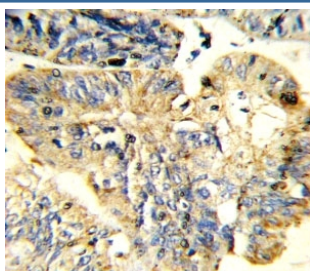
Catalog No.	Formulation	Size
F49998-0.4ML	In 1X PBS, pH 7.4, with 0.09% sodium azide	0.4 ml
F49998-0.08ML	In 1X PBS, pH 7.4, with 0.09% sodium azide	0.08 ml

[Bulk quote request](#)

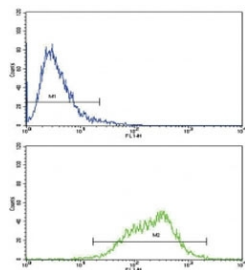
<b>Availability</b>	1-3 business days
<b>Species Reactivity</b>	Human
<b>Format</b>	Antigen affinity purified
<b>Clonality</b>	Polyclonal (rabbit origin)
<b>Isotype</b>	Rabbit Ig
<b>Purity</b>	Antigen affinity
<b>UniProt</b>	P15018
<b>Applications</b>	Western Blot : 1:1000 IHC (Paraffin) : 1:10-1:50 Flow Cytometry : 1:10-1:50
<b>Limitations</b>	This LIF antibody is available for research use only.



Western blot analysis of 1) human CEM, 2) rat PC-12, and 3) mouse spleen tissue lysate using LIF antibody at 1:1000. Observed molecular weight ~23/32~62kDa (unmodified/glycosylated).



Flow cytometric analysis of CEM cells using LIF antibody (green) compared to a negative control (blue). FITC-conjugated goat-anti-rabbit secondary Ab was used for the analysis.



## Description

LIF is a pleiotropic cytokine with roles in several different systems. It is involved in the induction of hematopoietic differentiation in normal and myeloid leukemia cells, induction of neuronal cell differentiation, regulator of mesenchymal to epithelial conversion during kidney development, and may also have a role in immune tolerance at the maternal-fetal interface.

## Application Notes

Titration of the LIF antibody may be required due to differences in protocols and secondary/substrate sensitivity.

## Immunogen

A portion of amino acids 72-101 from the human protein was used as the immunogen for this LIF antibody.

## Storage

Aliquot the LIF antibody and store frozen at -20oC or colder. Avoid repeated freeze-thaw cycles.