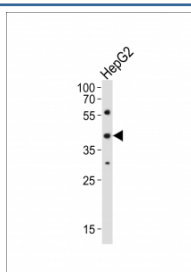


## Lhx1 Antibody (F53064)

Catalog No.	Formulation	Size
F53064-0.4ML	In 1X PBS, pH 7.4, with 0.09% sodium azide	0.4 ml
F53064-0.08ML	In 1X PBS, pH 7.4, with 0.09% sodium azide	0.08 ml

[Bulk quote request](#)

<b>Availability</b>	1-3 business days
<b>Species Reactivity</b>	Human
<b>Predicted Reactivity</b>	Rat
<b>Format</b>	Antigen affinity purified
<b>Host</b>	Rabbit
<b>Clonality</b>	Polyclonal (rabbit origin)
<b>Isotype</b>	Rabbit Ig
<b>Purity</b>	Antigen affinity
<b>UniProt</b>	P63006
<b>Applications</b>	Western Blot : 1:1000
<b>Limitations</b>	This Lhx1 antibody is available for research use only.



Western blot analysis of lysate from HepG2 cell line using Lhx1 antibody diluted at 1:1000.

## Description

Potential transcription factor. May play a role in early mesoderm formation and later in lateral mesoderm differentiation and neurogenesis.

## Application Notes

Titration of the Lhx1 antibody may be required due to differences in protocols and secondary/substrate sensitivity.

## Immunogen

This mouse Lhx1 antibody was produced from a rabbit immunized with a KLH conjugated synthetic peptide between 332-365 amino acids from the C-terminal region of mouse Lhx1.

## Storage

Aliquot the Lhx1 antibody and store frozen at -20oC or colder. Avoid repeated freeze-thaw cycles.