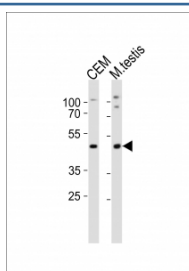


Lhx1 Antibody (F52978)

Catalog No.	Formulation	Size
F52978-0.4ML	In 1X PBS, pH 7.4, with 0.09% sodium azide	0.4 ml
F52978-0.08ML	In 1X PBS, pH 7.4, with 0.09% sodium azide	0.08 ml

[Bulk quote request](#)

Availability	1-3 business days
Species Reactivity	Human, Mouse
Predicted Reactivity	Chicken, Rat, Xenopus
Format	Antigen affinity purified
Clonality	Polyclonal (rabbit origin)
Isotype	Rabbit Ig
Purity	Antigen affinity
UniProt	P63006
Applications	Western Blot : 1:1000
Limitations	This Lhx1 antibody is available for research use only.



Western blot analysis of lysate from CEM cell line, mouse testis tissue lysate (left to right) using Lhx1 antibody diluted at 1:1000 for each lane.

Description

Potential transcription factor. May play a role in early mesoderm formation and later in lateral mesoderm differentiation and neurogenesis.

Application Notes

Titration of the Lhx1 antibody may be required due to differences in protocols and secondary/substrate sensitivity.

Immunogen

This mouse Lhx1 antibody was produced from a rabbit immunized with a KLH conjugated synthetic peptide between 170-204 amino acids from the Central region of mouse Lhx1.

Storage

Aliquot the Lhx1 antibody and store frozen at -20oC or colder. Avoid repeated freeze-thaw cycles.