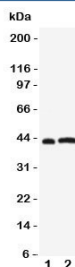


Leupaxin Antibody (R31317)

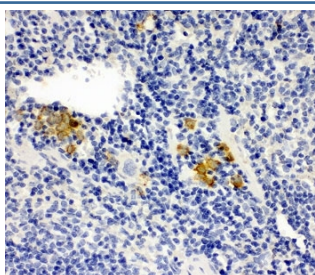
Catalog No.	Formulation	Size
R31317	0.5mg/ml if reconstituted with 0.2ml sterile DI water	100 ug

Bulk quote request

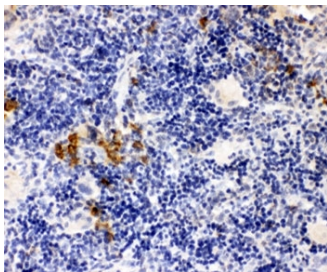
Availability	1-3 business days
Species Reactivity	Human, Mouse, Rat
Format	Antigen affinity purified
Host	Rabbit
Clonality	Polyclonal (rabbit origin)
Isotype	Rabbit IgG
Purity	Antigen affinity
Buffer	Lyophilized from 1X PBS with 2.5% BSA and 0.025% sodium azide/thimerosal
UniProt	O60711
Applications	Western Blot : 0.5-1ug/ml IHC (FFPE) : 0.5-1ug/ml
Limitations	This Leupaxin antibody is available for research use only.



Western blot testing of Leupaxin antibody and Lane 1: rat thymus; 2: human Jurkat cell lysate. Expected/observed size ~43KD



IHC-P: Leupaxin antibody testing of mouse spleen tissue



IHC-P: Leupaxin antibody testing of rat spleen tissue

Description

Leupaxin is a protein that in humans is encoded by the LPXN gene. This gene is mapped to 11q12.1. The product encoded by this gene is preferentially expressed in hematopoietic cells and belongs to the paxillin protein family. Similar to other members of this focal-adhesion-associated adaptor-protein family, it has four leucine-rich LD-motifs in the N-terminus and four LIM domains in the C-terminus. It may function in cell type-specific signaling by associating with PYK2, a member of focal adhesion kinase family. As a substrate for a tyrosine kinase in lymphoid cells, Leupaxin may also function in, and be regulated by, tyrosine kinase activity.

Application Notes

The stated application concentrations are suggested starting amounts. Titration of the Leupaxin antibody may be required due to differences in protocols and secondary/substrate sensitivity.

Immunogen

An amino acid sequence from the N-terminus of human Leupaxin (KKHLDPKQDCHKASLD) was used as the immunogen for this Leupaxin antibody.

Storage

After reconstitution, the Leupaxin antibody can be stored for up to one month at 4°C. For long-term, aliquot and store at -20°C. Avoid repeated freezing and thawing.