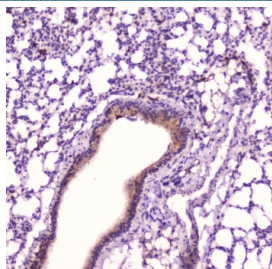


Leptin Antibody (RQ4442)

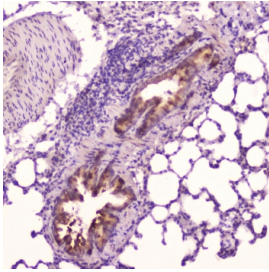
Catalog No.	Formulation	Size
RQ4442	0.5mg/ml if reconstituted with 0.2ml sterile DI water	100 ug

Bulk quote request

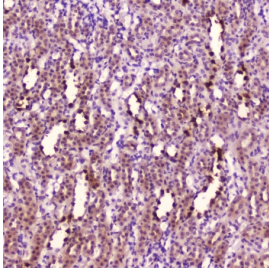
Availability	1-3 business days
Species Reactivity	Mouse, Rat
Format	Antigen affinity purified
Host	Rabbit
Clonality	Polyclonal (rabbit origin)
Isotype	Rabbit IgG
Purity	Antigen affinity
Buffer	Lyophilized from 1X PBS with 2% Trehalose and 0.025% sodium azide
UniProt	P41160
Localization	Secreted
Applications	Western Blot : 0.5-1ug/ml Immunohistochemistry (FFPE) : 1-2ug/ml ELISA (Capture Of Mouse Recombinant Protein) : 1-5ug/ml
Limitations	This Leptin antibody is available for research use only.



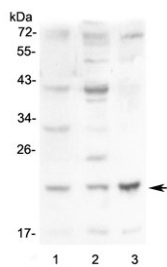
IHC testing of FFPE mouse lung tissue with Leptin antibody at 2ug/ml. HIER: boil tissue sections in pH6, 10mM citrate buffer, for 10-20 min followed by cooling at RT for 20 min.



IHC testing of FFPE rat lung tissue with Leptin antibody at 2ug/ml. HIER: boil tissue sections in pH6, 10mM citrate buffer, for 10-20 min followed by cooling at RT for 20 min.



IHC testing of FFPE rat kidney tissue with Leptin antibody at 2ug/ml. HIER: boil tissue sections in pH6, 10mM citrate buffer, for 10-20 min followed by cooling at RT for 20 min.



Western blot testing of 1) mouse small intestine, 2) mouse kidney and 3) mouse Neuro-2a lysate with Leptin antibody at 0.5ug/ml. Predicted molecular weight ~16 kDa.

Description

Leptin have been found to be obese and diabetic and to have reduced activity, metabolism and body temperature. cDNA clones encoding Leptin have been isolated from human, simian, mouse, and rat cells. The expression of Leptin mRNA has been shown to be restricted to adipose tissue. Although regulation of fat stores is deemed to be the primary function of leptin, it also plays a role in other physiological processes, as evidenced by its multiple sites of synthesis other than fat cells, and the multiple cell types beside hypothalamic cells that have leptin receptors. Many of these additional functions are yet to be defined.

Application Notes

Optimal dilution of the Leptin antibody should be determined by the researcher.

Immunogen

Mouse Leptin recombinant protein (amino acids V22-C167) was used as the immunogen for the Leptin antibody.

Storage

After reconstitution, the Leptin antibody can be stored for up to one month at 4oC. For long-term, aliquot and store at -20oC. Avoid repeated freezing and thawing.

