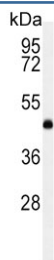


## LCAT Antibody (F55046)

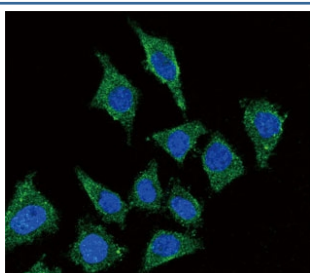
Catalog No.	Formulation	Size
F55046-0.4ML	In 1X PBS, pH 7.4, with 0.09% sodium azide	0.4 ml
F55046-0.08ML	In 1X PBS, pH 7.4, with 0.09% sodium azide	0.08 ml

[Bulk quote request](#)

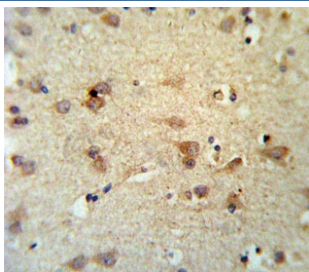
<b>Availability</b>	1-3 business days
<b>Species Reactivity</b>	Human
<b>Format</b>	Purified
<b>Clonality</b>	Polyclonal (rabbit origin)
<b>Isotype</b>	Rabbit Ig
<b>Purity</b>	Antigen affinity purified
<b>UniProt</b>	P04180
<b>Applications</b>	Flow Cytometry : 1:10-1:50 (1x10 <sup>6</sup> cells) Immunofluorescence : 1:10-1:50 Immunohistochemistry (FFPE) : 1:10-1:50 Western Blot : 1:500-1:1000
<b>Limitations</b>	This LCAT antibody is available for research use only.



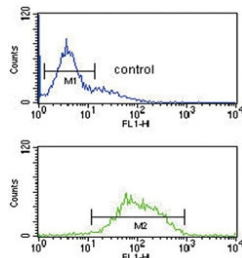
Western blot testing of human K562 cell lysate with LCAT antibody. Predicted molecular weight ~49 kDa.



Immunofluorescent staining of human HEK293 cells with LCAT antibody (green) and DAPI nuclear stain (blue).



IHC testing of FFPE human brain tissue with LCAT antibody. HIER: steam section in pH6 citrate buffer for 20 min and allow to cool prior to staining.



Flow cytometry testing of human K562 cells with LCAT antibody; Blue=isotype control, Green= LCAT antibody.

## Description

LCAT encodes the extracellular cholesterol esterifying enzyme, lecithin-cholesterol acyltransferase. The esterification of cholesterol is required for cholesterol transport.

## Application Notes

The stated application concentrations are suggested starting points. Titration of the LCAT antibody may be required due to differences in protocols and secondary/substrate sensitivity.

## Immunogen

A portion of amino acids 285-313 from the human protein was used as the immunogen for the LCAT antibody.

## Storage

Aliquot the LCAT antibody and store frozen at -20oC or colder. Avoid repeated freeze-thaw cycles.