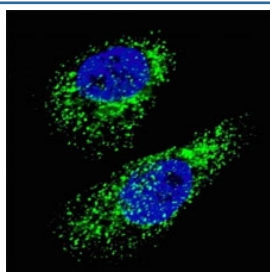


## LC3A Antibody (F46105)

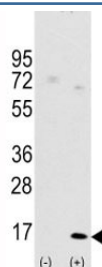
Catalog No.	Formulation	Size
F46105-0.4ML	In 1X PBS, pH 7.4, with 0.09% sodium azide	0.4 ml
F46105-0.08ML	In 1X PBS, pH 7.4, with 0.09% sodium azide	0.08 ml

[Bulk quote request](#)

<b>Availability</b>	1-3 business days
<b>Species Reactivity</b>	Human
<b>Predicted Reactivity</b>	Bovine, Mouse, Rat
<b>Format</b>	Antigen affinity purified
<b>Host</b>	Rabbit
<b>Clonality</b>	Polyclonal (rabbit origin)
<b>Isotype</b>	Rabbit Ig
<b>Purity</b>	Antigen affinity
<b>UniProt</b>	Q9H492
<b>Applications</b>	Immunofluorescence : 1:100 Western Blot : 1:1000
<b>Limitations</b>	This LC3A antibody is available for research use only.



Fluorescent image of Chloroquine treated U251 cells (50 uM, 16h) stained with LC3A antibody. Immunoreactivity is localized to autophagic vacuoles in the cytoplasm of U251 cells.



Western blot analysis of LC3A antibody and 293 cell lysate (2 ug/lane) either nontransfected (Lane 1) or transiently transfected with the LC3 /APG8a gene (2).

## Description

Macroautophagy is the major inducible pathway for the general turnover of cytoplasmic constituents in eukaryotic cells, it is also responsible for the degradation of active cytoplasmic enzymes and organelles during nutrient starvation.

Macroautophagy involves the formation of double-membrane bound autophagosomes which enclose the cytoplasmic constituent targeted for degradation in a membrane bound structure, which then fuse with the lysosome (or vacuole) releasing a single-membrane bound autophagic bodies which are then degraded within the lysosome (or vacuole).

MAP1A and MAP1B are microtubule-associated proteins which mediate the physical interactions between microtubules and components of the cytoskeleton. These proteins are involved in formation of autophagosomal vacuoles (autophagosomes). MAP1A and MAP1B each consist of a heavy chain subunit and multiple light chain subunits.

MAP1LC3a is one of the light chain subunits and can associate with either MAP1A or MAP1B. The precursor molecule is cleaved by APG4B/ATG4B to form the cytosolic form, LC3-I. This is activated by APG7L/ATG7, transferred to ATG3 and conjugated to phospholipid to form the membrane-bound form, LC3-II.

## Application Notes

Titration of the LC3A antibody may be required due to differences in protocols and secondary/substrate sensitivity.

## Immunogen

A portion of amino acids 91-117 from the human protein was used as the immunogen for this LC3A antibody.

## Storage

Aliquot the LC3A antibody and store frozen at -20oC or colder. Avoid repeated freeze-thaw cycles.