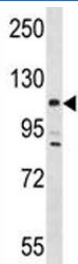


Lats2 Antibody (F47336)

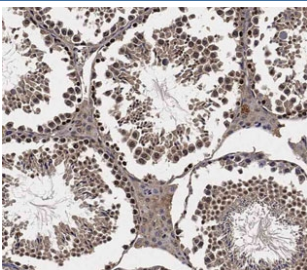
Catalog No.	Formulation	Size
F47336-0.4ML	In 1X PBS, pH 7.4, with 0.09% sodium azide	0.4 ml
F47336-0.08ML	In 1X PBS, pH 7.4, with 0.09% sodium azide	0.08 ml

[Bulk quote request](#)

Availability	1-3 business days
Species Reactivity	Mouse
Format	Antigen affinity purified
Host	Rabbit
Clonality	Polyclonal (rabbit origin)
Isotype	Rabbit Ig
Purity	Antigen affinity
UniProt	Q7TSJ6
Localization	Nuclear
Applications	Western Blot : 1:1000 Immunohistochemistry : 1:100
Limitations	This Lats2 antibody is available for research use only.



Lats2 antibody western blot analysis in mouse testis tissue lysate.



IHC staining of FFPE mouse testis with Lats2 antibody. HIER: boil tissue sections in pH 9 10mM Tris with 1mM EDTA for 20 min and allow to cool before testing.

Description

Negative regulator of YAP1 in the Hippo signaling pathway that plays a pivotal role in organ size control and tumor suppression by restricting proliferation and promoting apoptosis. The core of this pathway is composed of a kinase cascade wherein MST1/MST2, in complex with its regulatory protein SAV1, phosphorylates and activates LATS1/2 in complex with its regulatory protein MOB1, which in turn phosphorylates and inactivates YAP1 oncoprotein and WWTR1/TAZ. Phosphorylation of YAP1 by LATS2 inhibits its translocation into the nucleus to regulate cellular genes important for cell proliferation, cell death, and cell migration. Acts as a tumor suppressor which plays a critical role in centrosome duplication, maintenance of mitotic fidelity and genomic stability. Negatively regulates G1/S transition by down-regulating cyclin E/CDK2 kinase activity. Negative regulator of the androgen receptor (By similarity).

Application Notes

Titration of the Lats2 antibody may be required due to differences in protocols and secondary/substrate sensitivity.

Immunogen

A portion of amino acids 1000-1027 from the mouse protein was used as the immunogen for this Lats2 antibody.

Storage

Aliquot the Lats2 antibody and store frozen at -20oC or colder. Avoid repeated freeze-thaw cycles.