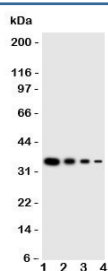


LAT2 Antibody (R31149)

Catalog No.	Formulation	Size
R31149	0.5mg/ml if reconstituted with 0.2ml sterile DI water	100 ug

[Bulk quote request](#)

Availability	1-3 business days
Species Reactivity	Human
Format	Antigen affinity purified
Host	Rabbit
Clonality	Polyclonal (rabbit origin)
Isotype	Rabbit IgG
Purity	Antigen affinity
Buffer	Lyophilized from 1X PBS with 2% Trehalose
UniProt	Q9GZY6
Applications	Western Blot : 0.5-1ug/ml
Limitations	This LAT2 antibody is available for research use only.



Western blot testing of LAT2 antibody; Lane 1: Recombinant human protein 10ng; 2: 5ng; 3: 2.5ng; 4: 1.25ng

Description

Linker for Activation of T Cells Family, Member 2, also known as LAB or NTAL, is a protein that in humans is encoded by the LAT2 gene. By genomic sequence analysis, Doyle et al.(2000) mapped the gene to chromosome 7q11.23. They noted that the flanking genes are highly conserved between mouse and human. By immunoprecipitation and immunoblot analysis, Brdicka et al.(2002) found that the protein associated with GRB2, SOS1, and GAB1 after B-cell receptor activation. Janssen et al.(2003) determined that phosphorylation of LAT2 is likely mediated by SYK upon B-cell receptor stimulation. Binding analysis indicated associations with GRB2, and, indirectly, with PLCG1 and PLCG2.

Application Notes

The stated application concentrations are suggested starting amounts. Titration of the LAT2 antibody may be required due to differences in protocols and secondary/substrate sensitivity.

Immunogen

An amino acid sequence from the N-terminus of human Linker for Activation of T Cells Family, Member 2 (KRSEKIYQQRSLRED) was used as the immunogen for this LAT2 antibody.

Storage

After reconstitution, the LAT2 antibody can be stored for up to one month at 4°C. For long-term, aliquot and store at -20°C. Avoid repeated freezing and thawing.