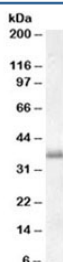


## LAT1 Antibody (R34070)

Catalog No.	Formulation	Size
R34070-100UG	0.5 mg/ml in 1X TBS, pH7.3, with 0.5% BSA (US sourced) and 0.02% sodium azide	100 ug

[Bulk quote request](#)

Availability	1-3 business days
Species Reactivity	Human
Predicted Reactivity	Mouse, Rat
Format	Antigen affinity purified
Clonality	Polyclonal (goat origin)
Isotype	Goat Ig
Purity	Antigen affinity
Gene ID	27040
Applications	Western Blot : 0.01-0.03ug/ml ELISA (peptide) LOD : 1:2000
Limitations	This LAT1 antibody is available for research use only.



Western blot testing of peripheral blood mononucleocyte lysate with LAT1 antibody at 0.01ug/ml. Predicted molecular weight ~28kDa, routinely observed at ~36kDa.

## Description

Additional name(s) for this target protein: Linker for activation of T cells; LAT; pp36; 36 kDa phospho-tyrosine adaptor protein

## Application Notes

Optimal dilution of the LAT1 antibody should be determined by the researcher.

1. This LAT1 antibody will detect isoforms a and b/c of the protein.

## **Immunogen**

Amino acids GAPDYENLQELN were used as the immunogen for this LAT1 antibody.

## **Storage**

Aliquot and store the LAT1 antibody at -20oC.