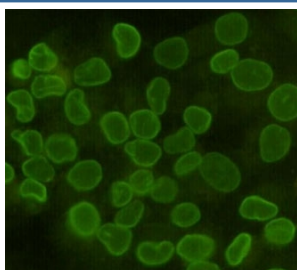


Lamin B1 Antibody [clone 5G8-D3-H7] (F54037)

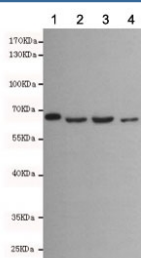
Catalog No.	Formulation	Size
F54037-0.1ML	In PBS with 50% glycerol and 0.03% ProClin 300	0.1 ml

Bulk quote request

Availability	1-3 business days
Species Reactivity	Human, Mouse, Primate
Format	Purified
Clonality	Monoclonal (mouse origin)
Isotype	Mouse IgG2b
Clone Name	5G8-D3-H7
Purity	Protein G affinity
UniProt	P20700
Applications	Western Blot : 1:500 Immunocytochemistry/Immunofluorescence : 1:100
Limitations	This Lamin B1 antibody is available for research use only.



ICC/IF staining of HeLa cells, fixed with 4% Paraformaldehyde, using Lamin B1 antibody at 1:100.



Western blot testing of 1) monkey COS7, 2) human Molt-4, 3) human A549 and 4) mouse NIH3T3 cell lysates with Lamin B1 antibody at 1:500. Predicted molecular weight ~66 kDa.

Description

Lamins are components of the nuclear lamina, a fibrous layer on the nucleoplasmic side of the inner nuclear membrane, which is thought to provide a framework for the nuclear envelope and may also interact with chromatin.

Application Notes

The stated application concentrations are suggested starting points. Titration of the Lamin B1 antibody may be required due to differences in protocols and secondary/substrate sensitivity.

Immunogen

A human recombinant protein was used as the immunogen for this Lamin B1 antibody.

Storage

Store the Lamin B1 antibody at -20oC.