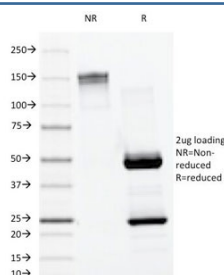


Lambda Antibody [clone LAM03] (V3152)

Catalog No.	Formulation	Size
V3152-100UG	0.2 mg/ml in 1X PBS with 0.1 mg/ml BSA (US sourced) and 0.05% sodium azide	100 ug
V3152-20UG	0.2 mg/ml in 1X PBS with 0.1 mg/ml BSA (US sourced) and 0.05% sodium azide	20 ug
V3152SAF-100UG	1 mg/ml in 1X PBS; BSA free, sodium azide free	100 ug

[Bulk quote request](#)

Availability	1-3 business days
Species Reactivity	Human
Format	Purified
Host	Mouse
Clonality	Monoclonal (mouse origin)
Isotype	Mouse IgG1, kappa
Clone Name	LAM03
Purity	Protein G affinity chromatography
UniProt	P01701, P01842
Localization	Cell surface, cytoplasmic and secreted
Applications	ELISA : 2-4ug/ml (order BSA/azide-free format)
Limitations	This Lambda antibody is available for research use only.



SDS-PAGE Analysis of Purified, BSA-Free Lambda Antibody (clone LAM03).
Confirmation of Integrity and Purity of the Antibody.

Description

This mAb is specific to lambda light chain of immunoglobulin and shows no cross-reaction with kappa light chain or any of the five heavy chains. In mammals, the two light chains in an antibody are always identical, with only one type of light chain, kappa or lambda. The ratio of Kappa to Lambda is 70:30. However, with the occurrence of multiple myeloma or other B-cell malignancies this ratio is disturbed. Antibody to the lambda light chain is reportedly useful in the identification of leukemias, plasmacytomas, and certain non-Hodgkin's lymphomas. Demonstration of clonality in lymphoid infiltrates indicates that the infiltrate is malignant.

Application Notes

The optimal dilution of the Lambda antibody for each application should be determined by the researcher.

1. Staining of formalin-fixed tissues requires boiling tissue sections in 10mM Citrate Buffer, pH 6.0, for 10-20 min followed by cooling at RT for 20 minutes.

Immunogen

Purified human lambda light chain was used as the immunogen for this Lambda antibody.

Storage

Store the Lambda antibody at 2-8oC (with azide) or aliquot and store at -20oC or colder (without azide).