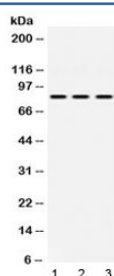


KRIT1 Antibody / CCM1 (R32542)

Catalog No.	Formulation	Size
R32542	0.5mg/ml if reconstituted with 0.2ml sterile DI water	100 ug

[Bulk quote request](#)

Availability	1-3 business days
Species Reactivity	Human, Mouse, Rat
Format	Antigen affinity purified
Host	Rabbit
Clonality	Polyclonal (rabbit origin)
Isotype	Rabbit IgG
Purity	Antigen affinity
Buffer	Lyophilized from 1X PBS with 2.5% BSA and 0.025% sodium azide
UniProt	O00522
Applications	Western Blot : 0.5-1ug/ml
Limitations	This KRIT1 antibody is available for research use only.



Western blot testing of 1) rat heart, 2) mouse NIH 3T3 and 3) human HeLa lysate with KRIT1 antibody at 0.5ug/ml. Predicted/observed molecular weight: ~84 kDa.

Description

Krev interaction trapped protein 1 is a protein that in humans is encoded by the CCM1 gene. This gene encodes a protein containing four ankyrin repeats, a band 4.1/ezrin/radixin/moesin (FERM) domain, and multiple NPXY sequences. The encoded protein is localized in the nucleus and cytoplasm. It binds to integrin cytoplasmic domain-associated protein-1 alpha (ICAP1alpha), and plays a critical role in beta1-integrin-mediated cell proliferation. It associates with junction proteins and RAS-related protein 1A (Rap1A), which requires the encoded protein for maintaining the integrity of endothelial junctions. It is also a microtubule-associated protein and may play a role in microtubule targeting. Mutations in this gene result in cerebral cavernous malformations. Multiple alternatively spliced transcript variants have been found for

this gene.

Application Notes

Differences in protocols and secondary/substrate sensitivity may require the KRIT1 antibody to be titrated for optimal performance.

Immunogen

Amino acids 703-736 (ENKMSFIVHTKQAGLVVKLLMKLNGQLMPTERNs) from the human protein were used as the immunogen for the KRIT1 antibody.

Storage

After reconstitution, the KRIT1 antibody can be stored for up to one month at 4°C. For long-term, aliquot and store at -20°C. Avoid repeated freezing and thawing.