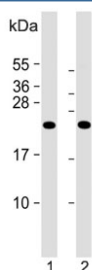


KLRC2 Antibody (F54459)

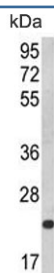
Catalog No.	Formulation	Size
F54459-0.4ML	In 1X PBS, pH 7.4, with 0.09% sodium azide	0.4 ml
F54459-0.08ML	In 1X PBS, pH 7.4, with 0.09% sodium azide	0.08 ml

[Bulk quote request](#)

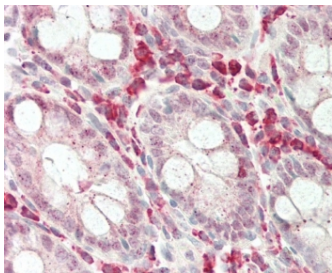
Availability	1-3 business days
Species Reactivity	Human
Format	Purified
Host	Rabbit
Clonality	Polyclonal (rabbit origin)
Isotype	Rabbit Ig
Purity	Antigen affinity purified
UniProt	P26717
Applications	Immunohistochemistry (FFPE) : 1:25 Flow Cytometry : 1:25 (1x10 ⁶ cells) Western Blot : 1:500-1:2000
Limitations	This KLRC2 antibody is available for research use only.



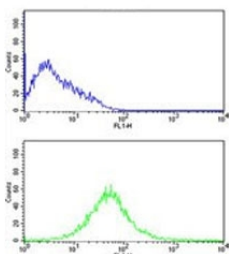
Western blot testing of human 1) uterus and 2) CCRF-CEM lysate with KLRC2 antibody. Predicted molecular weight ~26 kDa.



Western blot testing of human HL60 lysate with KLRC2 antibody. Predicted molecular weight ~26 kDa.



IHC testing of FFPE human colon tissue with KLRC2 antibody. HIER: steam section in pH6 citrate buffer for 20 min and allow to cool prior to staining.



Flow cytometry testing of fixed and permeabilized human HL60 cells with KLRC2 antibody; Blue=isotype control, Green= KLRC2 antibody.

Description

KLRC2 plays a role as a receptor for the recognition of MHC class I HLA-E molecules by NK cells and some cytotoxic T-cells.

Application Notes

The stated application concentrations are suggested starting points. Titration of the KLRC2 antibody may be required due to differences in protocols and secondary/substrate sensitivity.

Immunogen

A portion of amino acids 1-30 from the human protein was used as the immunogen for the KLRC2 antibody.

Storage

Aliquot the KLRC2 antibody and store frozen at -20oC or colder. Avoid repeated freeze-thaw cycles.