

KLF6 Antibody (F54861)

| Catalog No. | Formulation | Size |
|---------------|--|---------|
| F54861-0.4ML | In 1X PBS, pH 7.4, with 0.09% sodium azide | 0.4 ml |
| F54861-0.08ML | In 1X PBS, pH 7.4, with 0.09% sodium azide | 0.08 ml |

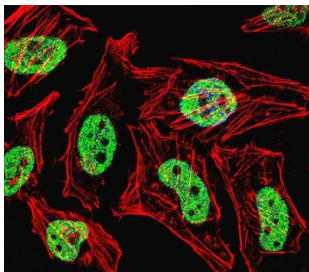
[Bulk quote request](#)

| | |
|---------------------------|--|
| Availability | 1-3 business days |
| Species Reactivity | Human, Mouse |
| Format | Purified |
| Host | Rabbit |
| Clonality | Polyclonal (rabbit origin) |
| Isotype | Rabbit Ig |
| Purity | Purified |
| UniProt | Q99612 |
| Localization | Nuclear, cytoplasmic |
| Applications | Western Blot : 1:500-1:1000 Immunofluorescence : 1:10-1:50 Immunohistochemistry (FFPE) : 1:10-1:50 Flow Cytometry : 1:10-1:50 (1x10 ⁶ cells) |
| Limitations | This KLF6 antibody is available for research use only. |

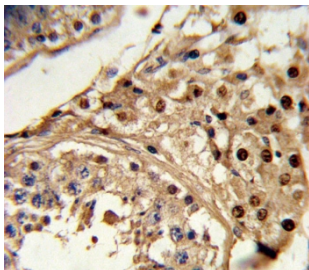
kDa
95
72
55
34
26



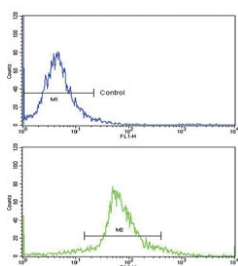
Western blot testing of mouse stomach lysate with KLF6 antibody. Expected molecular weight: 32-40 kDa.



Immunofluorescent staining of fixed and permeabilized human HeLa cells with KLF6 antibody (green), DAPI nuclear stain (blue) and anti-Actin (red).



IHC testing of FFPE human testis tissue with KLF6 antibody. HIER: steam section in pH6 citrate buffer for 20 min and allow to cool prior to staining.



Flow cytometry testing of human WiDr cells with KLF6 antibody; Blue=isotype control, Green= KLF6 antibody.

Description

COPEB is a member of the Kruppel-like family of transcription factors. The zinc finger protein is a transcriptional activator, and functions as a tumor suppressor.

Application Notes

The stated application concentrations are suggested starting points. Titration of the KLF6 antibody may be required due to differences in protocols and secondary/substrate sensitivity.

Immunogen

A portion of amino acids 159-186 from the human protein was used as the immunogen for the KLF6 antibody.

Storage

Aliquot the KLF6 antibody and store frozen at -20oC or colder. Avoid repeated freeze-thaw cycles.