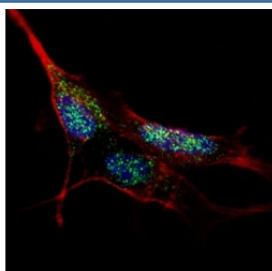


## KLF4 Antibody (F48147)

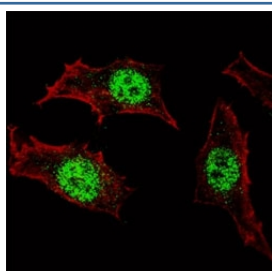
Catalog No.	Formulation	Size
F48147-0.4ML	In 1X PBS, pH 7.4, with 0.09% sodium azide	0.4 ml
F48147-0.08ML	In 1X PBS, pH 7.4, with 0.09% sodium azide	0.08 ml

[Bulk quote request](#)

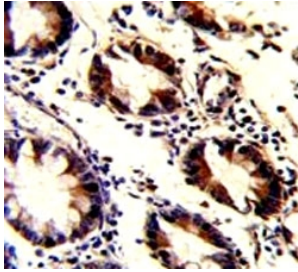
<b>Availability</b>	1-3 business days
<b>Species Reactivity</b>	Human
<b>Format</b>	Purified
<b>Clonality</b>	Polyclonal (rabbit origin)
<b>Isotype</b>	Rabbit Ig
<b>Purity</b>	Purified
<b>UniProt</b>	O43474
<b>Applications</b>	Western Blot : 1:1000 Immunofluorescence : 1:10-1:50 IHC (Paraffin) : 1:50-1:100
<b>Limitations</b>	This KLF4 antibody is available for research use only.



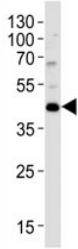
Fluorescent confocal image of SY5Y cells stained with KLF4 antibody at 1:1000. Immunoreactivity is localized to the nuclei.



Fluorescent confocal image of HeLa cells stained with KLF4 antibody at 1:100. Immunoreactivity is localized specifically to the nuclei.



IHC analysis of FFPE human colon carcinoma with KLF4 antibody



Western blot analysis of lysate from HT29 cell line using KLF4 antibody; Ab was diluted at 1:1000. Predicted molecular weight: 50-60 kDa + possible ~75 kDa (phosphorylated form).

## Description

Kruppel-like factor 4 (KLF4) is a transcription factor

## Application Notes

Titration of the KLF4 antibody may be required due to differences in protocols and secondary/substrate sensitivity.

## Immunogen

This KLF4 antibody was produced from rabbits immunized with a his tag recombinant protein of human KLF4.

## Storage

Aliquot the KLF4 antibody and store frozen at -20°C or colder. Avoid repeated freeze-thaw cycles.