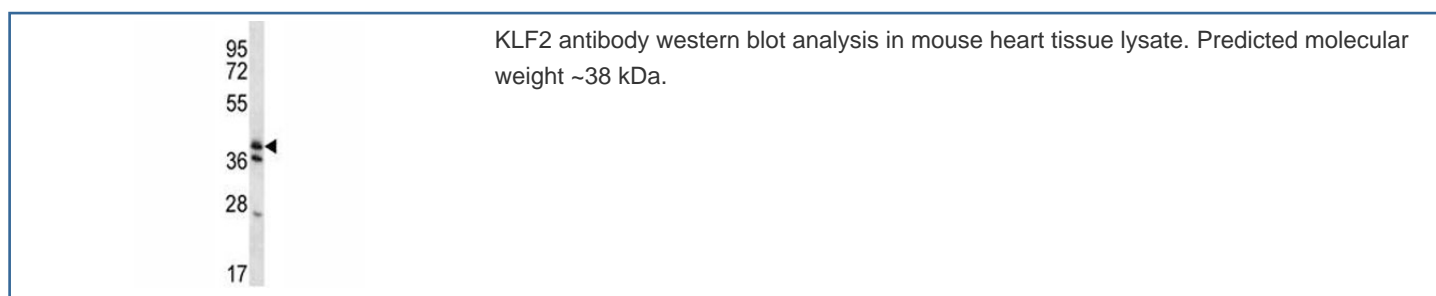


## KLF2 Antibody (F44344)

| Catalog No.   | Formulation                                | Size    |
|---------------|--|---------|
| F44344-0.4ML  | In 1X PBS, pH 7.4, with 0.09% sodium azide | 0.4 ml  |
| F44344-0.08ML | In 1X PBS, pH 7.4, with 0.09% sodium azide | 0.08 ml |

[Bulk quote request](#)

|                           |  |
|---------------------------|--|
| <b>Availability</b>       | 1-3 business days                                      |
| <b>Species Reactivity</b> | Human, Mouse   |
| <b>Format</b>             | Antigen affinity purified                              |
| <b>Host</b>               | Rabbit   |
| <b>Clonality</b>          | Polyclonal (rabbit origin)                             |
| <b>Isotype</b>            | Rabbit Ig  |
| <b>Purity</b>             | Antigen affinity                                       |
| <b>UniProt</b>            | Q9Y5W3   |
| <b>Applications</b>       | Western Blot : 1:1000                                  |
| <b>Limitations</b>        | This KLF2 antibody is available for research use only. |



## Description

KLF2 binds to the CACCC box in the beta-globin gene promoter and activates transcription (By similarity). [UniProt]

## Application Notes

Titration of the KLF2 antibody may be required due to differences in protocols and secondary/substrate sensitivity.

## Immunogen

A portion of amino acids 13-42 from the human protein was used as the immunogen for this KLF2 antibody.

## **Storage**

Aliquot the KLF2 antibody and store frozen at -20oC or colder. Avoid repeated freeze-thaw cycles.