

KLF11 Antibody / TIEG2 (F54867)

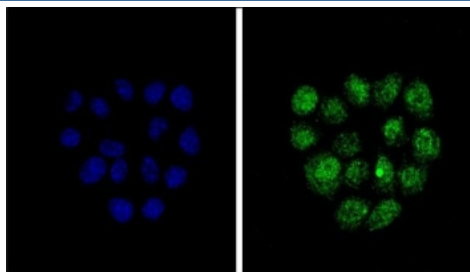
Catalog No.	Formulation	Size
F54867-0.4ML	In 1X PBS, pH 7.4, with 0.09% sodium azide	0.4 ml
F54867-0.08ML	In 1X PBS, pH 7.4, with 0.09% sodium azide	0.08 ml

[Bulk quote request](#)

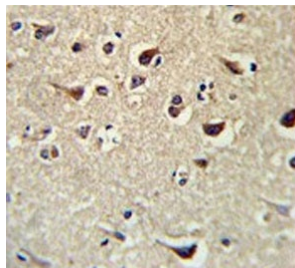
Availability	1-3 business days
Species Reactivity	Human
Format	Purified
Host	Rabbit
Clonality	Polyclonal (rabbit origin)
Isotype	Rabbit Ig
Purity	Purified
UniProt	O14901
Localization	Nuclear
Applications	Immunohistochemistry (FFPE) : 1:50-1:100 Flow Cytometry : 1:10-1:50 (1x10 ⁶ cells) Immunofluorescence : 1:10-1:50 Western Blot : 1:500-1:1000
Limitations	This KLF11 antibody is available for research use only.



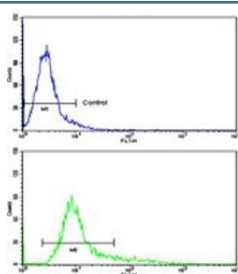
Western blot testing of human K562 cell lysate with KLF11 antibody. Expected molecular weight: 55-65 kDa.



Immunofluorescent staining of human HeLa cells with KLF11 antibody (green) and DAPI nuclear stain (blue).



IHC testing of FFPE human brain tissue with KLF11 antibody. HIER: steam section in pH6 citrate buffer for 20 min and allow to cool prior to staining.



Flow cytometry testing of human HEK293 cells with KLF11 antibody; Blue=isotype control, Green= KLF11 antibody.

Description

TIEG2 is a transcription factor. The protein activates the epsilon- and gamma-globin gene promoters and, to a much lower degree, the beta-globin gene and represses promoters containing SP1-like binding inhibiting cell growth. It represses transcription of SMAD7 which enhances TGF-beta signaling. It induces apoptosis.

Application Notes

The stated application concentrations are suggested starting points. Titration of the KLF11 antibody may be required due to differences in protocols and secondary/substrate sensitivity.

Immunogen

A portion of amino acids 7-36 from the human protein was used as the immunogen for the KLF11 antibody.

Storage

Aliquot the KLF11 antibody and store frozen at -20oC or colder. Avoid repeated freeze-thaw cycles.

