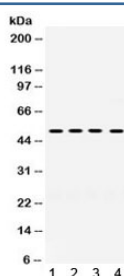


KIM1 Antibody / HAVCR1 (R32305)

Catalog No.	Formulation	Size
R32305	0.5mg/ml if reconstituted with 0.2ml sterile DI water	100 ug

Bulk quote request

Availability	1-3 business days
Species Reactivity	Human
Format	Antigen affinity purified
Host	Rabbit
Clonality	Polyclonal (rabbit origin)
Isotype	Rabbit IgG
Purity	Antigen affinity
Buffer	Lyophilized from 1X PBS with 2.5% BSA and 0.025% sodium azide
UniProt	Q96D42
Applications	Western Blot : 0.1-0.5ug/ml
Limitations	This KIM1 antibody is available for research use only.



Western blot testing of human 1) HeLa, 2) PANC, 3) HepG2 and 4) A549 cell lysate with KIM1 antibody. Predicted molecular weight~39 kDa, routinely observed at ~55 kDa (Ref 1), and a heavily glycosylated mature form at ~100 kDa (Ref 2).

Description

Kidney injury molecule 1, also known as HAVCR1, HAVCR or TIM1, is a protein that in humans is encoded by the HAVCR1 gene. It may play a role in T-helper cell development and the regulation of asthma and allergic diseases. Receptor for TIMD4 (By similarity). May play a role in kidney injury and repair. [UniProt]

Application Notes

Optimal dilution of the KIM1 antibody should be determined by the researcher.

Immunogen

Amino acids QQLSVSFSSLQIKALQNAVEKEVQAEDNIYIENSLYATD of human HAVCR1 were used as the immunogen for the KIM1 antibody.

Storage

After reconstitution, the KIM1 antibody can be stored for up to one month at 4oC. For long-term, aliquot and store at -20oC. Avoid repeated freezing and thawing.

References (2)