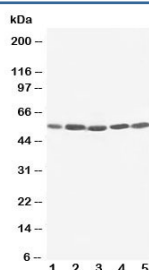


## KIM-1 Antibody (R30706)

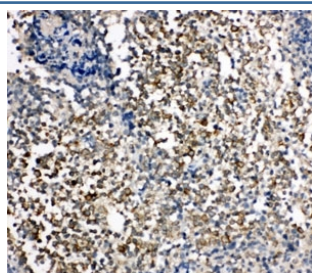
Catalog No.	Formulation	Size
R30706	0.5mg/ml if reconstituted with 0.2ml sterile DI water	100 ug

**Bulk quote request**

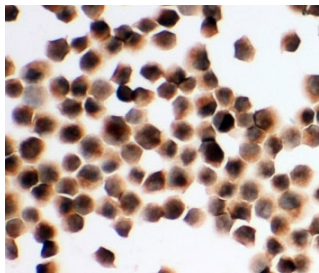
<b>Availability</b>	1-3 business days
<b>Species Reactivity</b>	Human
<b>Format</b>	Antigen affinity purified
<b>Host</b>	Rabbit
<b>Clonality</b>	Polyclonal (rabbit origin)
<b>Isotype</b>	Rabbit IgG
<b>Purity</b>	Antigen affinity
<b>Buffer</b>	Lyophilized from 1X PBS with 2.5% BSA and 0.025% sodium azide/thimerosal
<b>UniProt</b>	Q96D42
<b>Applications</b>	Western Blot : 0.5-1ug/ml IHC (FFPE) : 0.5-1ug/ml Immunocytochemistry : 0.5-1ug/ml
<b>Limitations</b>	This KIM-1 antibody is available for research use only.



Western blot testing of KIM-1 antibody and human cell lysate 1: SMMC-7721; 2: HeLa; 3: PANC; 4: M231; 5: M453 cell lysate. Predicted molecular weight~39 kDa, routinely observed at ~55 kDa (Ref 1), and a heavily glycosylated mature form at ~100 kDa (Ref 2).



IHC-P: KIM-1 antibody testing of human tonsil tissue. HIER: steamed with pH6 citrate buffer.



ICC testing of K562 cells

## Description

Kidney injury molecule 1, also known as HAVCR1, HAVCR or TIM1, is a protein that in humans is encoded by the KIM1 gene. The KIM-1 protein is a receptor for virus through the infection of canine osteogenic sarcoma cells expressing HAVCR1 with HAV. Using a monoclonal antibody to mouse KIM-1, it was found the protein expressed after activation of naive T cells and on T cells differentiated in Th2-polarizing conditions. Ectopic expression of KIM-1 during mouse T-cell differentiation leads to production of the Th2-type cytokine IL4, but not the Th1-type cytokine Ifng. KIM1-expressing epithelial cells internalized apoptotic bodies, and the protein is directly responsible for phagocytosis in cultured primary rat tubule epithelial cells and in porcine and canine epithelial cell lines.

## Application Notes

The stated application concentrations are suggested starting amounts. Titration of the KIM-1 antibody may be required due to differences in protocols and secondary/substrate sensitivity.

## Immunogen

An amino acid sequence from the C-terminus of human KIM-1 (IKALQNAVEKEVQAEDN) was used as the immunogen for this KIM-1 antibody.

## Storage

After reconstitution, the KIM-1 antibody can be stored for up to one month at 4°C. For long-term, aliquot and store at -20°C. Avoid repeated freezing and thawing.

## References (2)