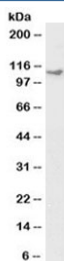


KIF5B Antibody (Biotin Conjugate) (R35405BTN)

Catalog No.	Formulation	Size
R35405BTN	0.5 mg/ml in 1X TBS, pH7.3, with 0.5% BSA (US sourced) and 0.02% sodium azide	100 ug

[Bulk quote request](#)

Availability	1-3 business days
Species Reactivity	Human, Dog
Predicted Reactivity	Cow, Mouse, Rat
Format	Biotin Conjugate
Host	Goat
Clonality	Polyclonal (goat origin)
Isotype	Goat Ig
Purity	Antigen affinity
Gene ID	3799
Applications	Western Blot : 1-3ug/ml ELISA (peptide) LOD : 1:8000
Limitations	This KIF5B antibody is available for research use only.



Western blot of HeLa lysate with biotinylated KIF5B antibody at 1ug/ml. Predicted molecular weight: ~110 kDa.

Description

Additional name(s) for this target protein: Kinesin family member 5B, Kinesin 1, UKHC

Application Notes

Optimal dilution of the KIF5B antibody should be determined by the researcher.

Immunogen

Amino acids QPVAVRGGGGKQV were used as the immunogen for this KIF5B antibody.

Storage

Aliquot and store the KIF5B antibody at -20oC.