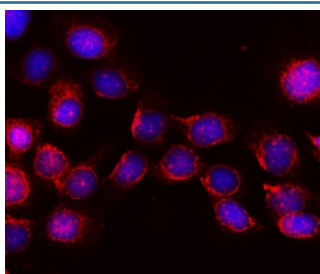


## KIBRA Antibody / WWC1 (RQ5851)

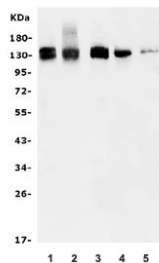
Catalog No.	Formulation	Size
RQ5851	0.5mg/ml if reconstituted with 0.2ml sterile DI water	100 ug

**Bulk quote request**

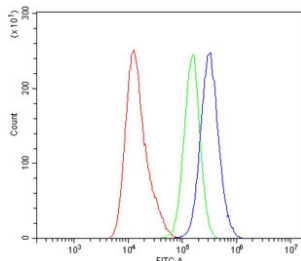
<b>Availability</b>	1-3 business days
<b>Species Reactivity</b>	Human, Mouse, Rat
<b>Format</b>	Antigen affinity purified
<b>Host</b>	Rabbit
<b>Clonality</b>	Polyclonal (rabbit origin)
<b>Isotype</b>	Rabbit IgG
<b>Purity</b>	Affinity purified
<b>Buffer</b>	Lyophilized from 1X PBS with 2% Trehalose and 0.025% sodium azide
<b>UniProt</b>	Q8IX03
<b>Localization</b>	Cytoplasmic, nuclear, plasma membrane
<b>Applications</b>	Western Blot : 0.5-1ug/ml Immunofluorescence : 2-4ug/ml Flow Cytometry : 1-3ug/million cells Direct ELISA : 0.1-0.5ug/ml
<b>Limitations</b>	This KIBRA antibody is available for research use only.



Immunofluorescent staining of FFPE human A431 cells with KIBRA antibody (red) and DAPI nuclear stain (blue). HIER: steam section in pH6 citrate buffer for 20 min.



Western blot testing of human 1) MCF7, 2) MDA-MB-453, 3) HEK293, 4) rat brain and 5) mouse brain lysate with KIBRA antibody. Predicted molecular weight ~125 kDa.



Flow cytometry testing of human A431 cells with KIBRA antibody at 1ug/million cells (blocked with goat sera); Red=cells alone, Green=isotype control, Blue= KIBRA antibody.

## Description

Protein KIBRA also known as 'kidney and brain expressed protein' or WW domain-containing protein 1 (WWC1) is a protein that in humans is encoded by the WWC1 gene. The protein encoded by this gene is a cytoplasmic phosphoprotein that interacts with PRKC-zeta and dynein light chain-1. Alleles of this gene have been found that enhance memory in some individuals. Three transcript variants encoding different isoforms have been found for this gene.

## Application Notes

Optimal dilution of the KIBRA antibody should be determined by the researcher.

## Immunogen

Recombinant human protein (amino acids D990-Q1080) was used as the immunogen for the KIBRA antibody.

## Storage

After reconstitution, the KIBRA antibody can be stored for up to one month at 4°C. For long-term, aliquot and store at -20°C. Avoid repeated freezing and thawing.