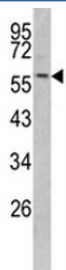


Keratin-14 Antibody (F49812)

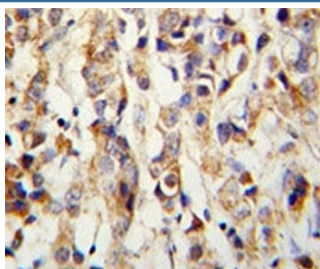
Catalog No.	Formulation	Size
F49812-0.4ML	In 1X PBS, pH 7.4, with 0.09% sodium azide	0.4 ml
F49812-0.08ML	In 1X PBS, pH 7.4, with 0.09% sodium azide	0.08 ml

[Bulk quote request](#)

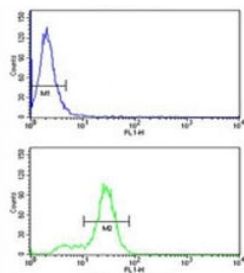
Availability	1-3 business days
Species Reactivity	Human, Mouse
Predicted Reactivity	Rat, Bovine
Format	Purified
Clonality	Polyclonal (rabbit origin)
Isotype	Rabbit Ig
Purity	Purified
UniProt	P02533
Applications	Western Blot : 1:1000 IHC (Paraffin) : 1:50-1:100 Flow Cytometry : 1:10-1:50
Limitations	This Keratin-14 antibody is available for research use only.



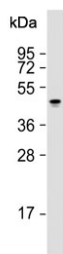
Western blot analysis of Keratin-14 antibody and mouse NIH3T3 lysate.



IHC analysis of FFPE human breast carcinoma with Keratin-14 antibody



Keratin-14 antibody flow cytometry analysis of MDA-MB231 cells (bottom histogram) compared to a [negative control](#) (top histogram). FITC-conjugated goat-anti-rabbit secondary Ab was used for the analysis.



Western blot analysis of Keratin-14 antibody and human A431 cell lysate.

Description

KRT14 is a member of the keratin family, the most diverse group of intermediate filaments. This protein, a type I keratin, is usually found as a heterotetramer with two keratin 5 molecules, a type II keratin. Together they form the cytoskeleton of epithelial cells.

Application Notes

Titration of the Keratin-14 antibody may be required due to differences in protocols and secondary/substrate sensitivity.

Immunogen

A portion of amino acids 276-303 from the human protein was used as the immunogen for this Keratin-14 antibody.

Storage

Aliquot the Keratin-14 antibody and store frozen at -20°C or colder. Avoid repeated freeze-thaw cycles.