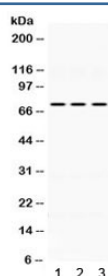


KEAP1 Antibody (R32225)

Catalog No.	Formulation	Size
R32225	0.5mg/ml if reconstituted with 0.2ml sterile DI water	100 ug

Bulk quote request

Availability	1-3 business days
Species Reactivity	Human
Format	Antigen affinity purified
Host	Rabbit
Clonality	Polyclonal (rabbit origin)
Isotype	Rabbit IgG
Purity	Antigen affinity
Buffer	Lyophilized from 1X PBS with 2.5% BSA and 0.025% sodium azide
UniProt	Q14145
Applications	Western Blot : 0.1-0.5ug/ml
Limitations	This KEAP1 antibody is available for research use only.



Western blot testing of human 1) HeLa, 2) MCF7 and 3) SW620 lysate with KEAP1 antibody. Expected/observed molecular weight ~70 kDa.

Description

KELCH-LIKE ECH-ASSOCIATED PROTEIN 1 is a protein that in humans is encoded by the KEAP1 gene. Keap1 contains a central BTB/POZ domain and a C-terminal double glycine repeat (DGR), or Kelch, module. Keap1 has been shown to interact with Nrf2, a master regulator of the antioxidant response, which is important for the amelioration of oxidative stress. In the presence of the electrophilic agent diethylmalate, Nrf2 activity is released from Keap1 and Nrf2 translocate to the nucleus. Under quiescent conditions, Nrf2 is anchored in the cytoplasm through binding to Keap1, which, in turn, facilitates the ubiquitination and subsequent proteolysis of Nrf2. Because Nrf2 activation leads to a coordinated antioxidant and anti-inflammatory response, and Keap1 represses Nrf2 activation, Keap1 has become a very

attractive drug target.

Application Notes

Optimal dilution of the KEAP1 antibody should be determined by the researcher.

Immunogen

Amino acids 25-205 of human KEAP1 were used as the immunogen for the KEAP1 antibody.

Storage

After reconstitution, the KEAP1 antibody can be stored for up to one month at 4°C. For long-term, aliquot and store at -20°C. Avoid repeated freezing and thawing.