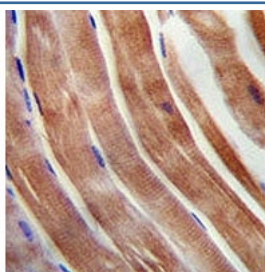


## KEAP1 Antibody (F40464)

Catalog No.	Formulation	Size
F40464-0.4ML	In 1X PBS, pH 7.4, with 0.09% sodium azide	0.4 ml
F40464-0.08ML	In 1X PBS, pH 7.4, with 0.09% sodium azide	0.08 ml

[Bulk quote request](#)

<b>Availability</b>	1-3 business days
<b>Species Reactivity</b>	Human
<b>Predicted Reactivity</b>	Pig
<b>Format</b>	Antigen affinity purified
<b>Host</b>	Rabbit
<b>Clonality</b>	Polyclonal (rabbit origin)
<b>Isotype</b>	Rabbit Ig
<b>Purity</b>	Antigen affinity
<b>UniProt</b>	Q14145
<b>Applications</b>	Western Blot : 1:1000 IHC (Paraffin) : 1:50-1:100
<b>Limitations</b>	This KEAP1 antibody is available for research use only.



KEAP1 antibody immunohistochemistry analysis in formalin fixed and paraffin embedded human skeletal muscle.



KEAP1 antibody western blot analysis in HepG2 lysate. Predicted molecular weight ~70 kDa.

## Description

KEAP1 acts as a substrate adapter protein for the E3 ubiquitin ligase complex formed by CUL3 and RBX1 and targets NFE2L2/NRF2 for ubiquitination and degradation by the proteasome, thus resulting in the suppression of its transcriptional activity and the repression of antioxidant response element-mediated detoxifying enzyme gene expression. Retains NFE2L2/NRF2 and may also retain BPTF in the cytosol. Targets PGAM5 for ubiquitination and degradation by the proteasome [UniProt]

## Application Notes

The stated application concentrations are suggested starting amounts. Titration of the KEAP1 antibody may be required due to differences in protocols and secondary/substrate sensitivity.

## Immunogen

A portion of amino acids 422-449 from the human protein was used as the immunogen for this KEAP1 antibody.

## Storage

Store at 4°C for up to one month. For long term, aliquot the KEAP1 antibody and store frozen at -20°C or colder. Avoid repeated freeze-thaw cycles.