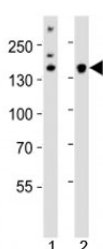


## Kdm6b Antibody (F52856)

Catalog No.	Formulation	Size
F52856-0.4ML	In 1X PBS, pH 7.4, with 0.09% sodium azide	0.4 ml
F52856-0.08ML	In 1X PBS, pH 7.4, with 0.09% sodium azide	0.08 ml

**Bulk quote request**

<b>Availability</b>	1-3 business days
<b>Species Reactivity</b>	Human, Mouse
<b>Format</b>	Antigen affinity purified
<b>Clonality</b>	Polyclonal (rabbit origin)
<b>Isotype</b>	Rabbit Ig
<b>Purity</b>	Antigen affinity
<b>UniProt</b>	Q5NCY0
<b>Applications</b>	Western Blot : 1:1000
<b>Limitations</b>	This Kdm6b antibody is available for research use only.



Western blot analysis of lysate from 1) HeLa cell line and 2) mouse cerebellum tissue using Kdm6b antibody at 1:1000. Predicted molecular weight ~176 kDa.

## Description

Histone demethylase that specifically demethylates 'Lys- 27' of histone H3, thereby playing a central role in histone code. Demethylates trimethylated and dimethylated H3 'Lys-27'. Plays a central role in regulation of posterior development, by regulating HOX gene expression. Involved in inflammatory response by participating in macrophage differentiation in case of inflammation by regulating gene expression and macrophage differentiation.

## Application Notes

Titration of the Kdm6b antibody may be required due to differences in protocols and secondary/substrate sensitivity.

## Immunogen

This Kdm6b antibody was produced from a rabbit immunized with a KLH conjugated synthetic peptide between 1023-1057 amino acids from mouse Kdm6b.

## Storage

Aliquot the Kdm6b antibody and store frozen at -20oC or colder. Avoid repeated freeze-thaw cycles.