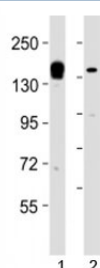


## KDM6A Antibody (F53253)

Catalog No.	Formulation	Size
F53253-0.4ML	In 1X PBS, pH 7.4, with 0.09% sodium azide	0.4 ml
F53253-0.08ML	In 1X PBS, pH 7.4, with 0.09% sodium azide	0.08 ml

[Bulk quote request](#)

<b>Availability</b>	1-3 business days
<b>Species Reactivity</b>	Human
<b>Format</b>	Antigen affinity purified
<b>Host</b>	Rabbit
<b>Clonality</b>	Polyclonal (rabbit origin)
<b>Isotype</b>	Rabbit Ig
<b>Purity</b>	Antigen affinity
<b>UniProt</b>	O15550
<b>Applications</b>	Western Blot : 1:2000
<b>Limitations</b>	This KDM6A antibody is available for research use only.



Western blot testing of KDM6A antibody at 1:2000 dilution. Lane 1: human liver lysate; 2: HeLa lysate; Predicted molecular weight ~ 154 kDa.

## Description

Histone demethylase that specifically demethylates 'Lys- 27' of histone H3, thereby playing a central role in histone code. Demethylates trimethylated and dimethylated but not monomethylated H3 'Lys-27'. Plays a central role in regulation of posterior development, by regulating HOX gene expression. Demethylation of 'Lys-27' of histone H3 is concomitant with methylation of 'Lys-4' of histone H3, and regulates the recruitment of the PRC1 complex and monoubiquitination of histone H2A.

## Application Notes

Titration of the KDM6A antibody may be required due to differences in protocols and secondary/substrate sensitivity.

## **Immunogen**

This KDM6A antibody was produced from a rabbit immunized with a KLH conjugated synthetic peptide between 797-832 amino acids from the Central region of human KDM6A.

## **Storage**

Aliquot the KDM6A antibody and store frozen at -20oC or colder. Avoid repeated freeze-thaw cycles.