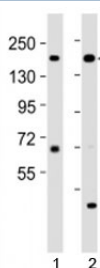


Kdm6a Antibody (F53213)

| Catalog No. | Formulation | Size |
|---------------|--|---------|
| F53213-0.4ML | In 1X PBS, pH 7.4, with 0.09% sodium azide | 0.4 ml |
| F53213-0.08ML | In 1X PBS, pH 7.4, with 0.09% sodium azide | 0.08 ml |

[Bulk quote request](#)

| | |
|---------------------------|---|
| Availability | 1-3 business days |
| Species Reactivity | Mouse |
| Format | Antigen affinity purified |
| Host | Rabbit |
| Clonality | Polyclonal (rabbit origin) |
| Isotype | Rabbit Ig |
| Purity | Antigen affinity |
| UniProt | O70546 |
| Applications | Western Blot : 1:2000 |
| Limitations | This Kdm6a antibody is available for research use only. |



Western blot testing of Kdm6a antibody at 1:2000 dilution. Lane 1: mouse cerebellum lysate; 2: mouse spleen lysate; Predicted molecular weight ~ 154 kDa.

Description

Histone demethylase that specifically demethylates 'Lys- 27' of histone H3, thereby playing a central role in histone code. Demethylates trimethylated and dimethylated but not monomethylated H3 'Lys-27'. Plays a central role in regulation of posterior development, by regulating HOX gene expression. Demethylation of 'Lys-27' of histone H3 is concomitant with methylation of 'Lys-4' of histone H3, and regulates the recruitment of the PRC1 complex and monoubiquitination of histone H2A (By similarity).

Application Notes

Titration of the Kdm6a antibody may be required due to differences in protocols and secondary/substrate sensitivity.

Immunogen

This mouse Kdm6a antibody was produced from a rabbit immunized with a KLH conjugated synthetic peptide between 1041-1074 amino acids from the C-terminal region of mouse Kdm6a.

Storage

Aliquot the Kdm6a antibody and store frozen at -20oC or colder. Avoid repeated freeze-thaw cycles.