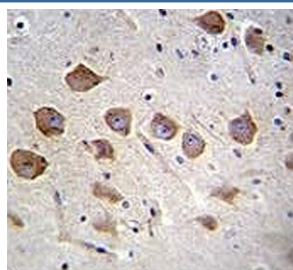


## KCNRG Antibody (F40014)

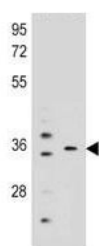
Catalog No.	Formulation	Size
F40014-0.4ML	In 1X PBS, pH 7.4, with 0.09% sodium azide	0.4 ml
F40014-0.08ML	In 1X PBS, pH 7.4, with 0.09% sodium azide	0.08 ml

[Bulk quote request](#)

<b>Availability</b>	1-3 business days
<b>Species Reactivity</b>	Mouse
<b>Format</b>	Antigen affinity purified
<b>Host</b>	Rabbit
<b>Clonality</b>	Polyclonal (rabbit origin)
<b>Isotype</b>	Rabbit Ig
<b>Purity</b>	Antigen affinity
<b>UniProt</b>	Q8N5I3
<b>Applications</b>	IHC (Paraffin) : 1:10-1:50 Western Blot : 1:1000
<b>Limitations</b>	This KCNRG antibody is available for research use only.



KCNRG antibody analysis in formalin fixed and paraffin embedded human brain tissue.



KCNRG antibody western blot analysis in mouse liver, lung tissue lysate

## Description

This gene encodes a member of the tripartite motif (TRIM) family. The TRIM motif includes three zinc-binding domains, a RING, a B-box type 1 and a B-box type 2, and a coiled-coil region. This gene is located on chromosome 13 within the minimal deletion region for B-cell chronic lymphocytic leukemia. Multiple alternatively spliced transcript variants have been found for this gene.

## Application Notes

Titration of the KCNRG antibody may be required due to differences in protocols and secondary/substrate sensitivity.

## Immunogen

A portion of amino acids 175-202 from the human protein was used as the immunogen for this KCNRG antibody.

## Storage

Aliquot the KCNRG antibody and store frozen at -20oC or colder. Avoid repeated freeze-thaw cycles.