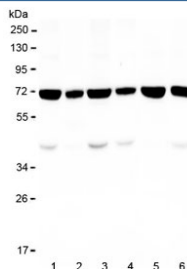


## KBTBD2 Antibody (RQ4935)

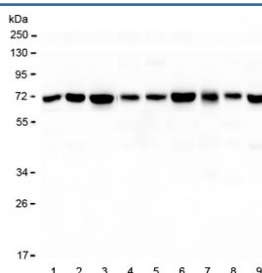
Catalog No.	Formulation	Size
RQ4935	0.5mg/ml if reconstituted with 0.2ml sterile DI water	100 ug

[Bulk quote request](#)

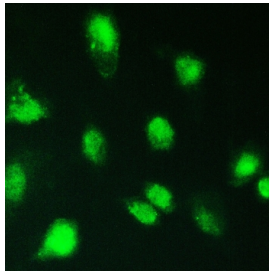
<b>Availability</b>	1-3 business days
<b>Species Reactivity</b>	Human, Mouse, Rat
<b>Format</b>	Antigen affinity purified
<b>Host</b>	Rabbit
<b>Clonality</b>	Polyclonal (rabbit origin)
<b>Isotype</b>	Rabbit IgG
<b>Purity</b>	Antigen affinity purified
<b>Buffer</b>	Lyophilized from 1X PBS with 2% Trehalose and 0.025% sodium azide
<b>UniProt</b>	Q8IY47
<b>Applications</b>	Western Blot : 0.5-1ug/ml Immunocytochemistry/Immunofluorescence : 2-4ug/ml Flow Cytometry : 1-3ug/million cells
<b>Limitations</b>	This KBTBD2 antibody is available for research use only.



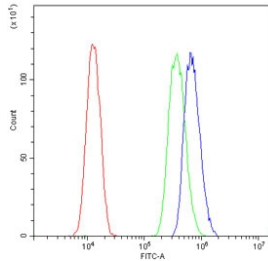
Western blot testing of human 1) HeLa, 2) placenta, 3) K562, 4) U-2 OS, 5) ThP1 and 6) A549 lysate with KBTBD2 antibody at 0.5ug/ml. Predicted molecular weight ~71 kDa.



Western blot testing of 1) rat brain, 2) rat heart, 3) rat kidney, 4) rat ovary, 5) mouse brain, 6) mouse heart, 7) mouse kidney, 8) mouse testis and 9) mouse SP2/0 lysate with KBTBD2 antibody at 0.5ug/ml. Predicted molecular weight ~71 kDa.



IF/ICC staining of FFPE human A549 cells with KBTBD2 antibody at 2ug/ml. HIER: steam section in pH6 citrate buffer for 20 min.



Flow cytometry testing of human U-87 MG cells with KBTBD2 antibody at 1ug/million cells (blocked with goat sera); Red=cells alone, Green=isotype control, Blue= KBTBD2 antibody.

## Description

Kelch repeat and BTB domain containing 2 (KBTBD2), also known as BTB and kelch domain-containing protein 1, encodes a BTB-Kelch family subunit that p85 alpha-specific recognition for the Cullin3-based E3 ubiquitin ligase complex, which regulates p85 alpha protein ubiquitination and subsequently regulates phosphoinositide-3 kinases (PI3K) signaling. However, the expression profile and functional significance of Kbtbd2 is still largely unknown. The Human Protein Atlas which is an online source shows high Kbtbd2 expression in the spleen and thymus, suggesting that Kbtbd2 might be involved in immunization. In addition, Kbtbd2 is related to Src-induced phosphorylation of protein, spermatogonial stem cell activity and insulin sensitivity.

## Application Notes

Optimal dilution of the KBTBD2 antibody should be determined by the researcher.

## Immunogen

Amino acids QYDLELDRWLSLRQHISERVLWDLGRDFR from the human protein were used as the immunogen for the KBTBD2 antibody.

## Storage

After reconstitution, the KBTBD2 antibody can be stored for up to one month at 4oC. For long-term, aliquot and store at -20oC. Avoid repeated freezing and thawing.