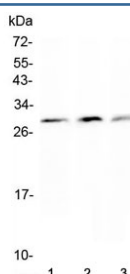


Kallikrein-2 Antibody (R30708)

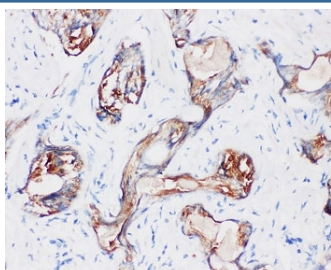
Catalog No.	Formulation	Size
R30708	0.5mg/ml if reconstituted with 0.2ml sterile DI water	100 ug

Bulk quote request

Availability	1-3 business days
Species Reactivity	Human
Format	Antigen affinity purified
Host	Rabbit
Clonality	Polyclonal (rabbit origin)
Isotype	Rabbit IgG
Purity	Antigen affinity
Buffer	Lyophilized from 1X PBS with 2.5% BSA and 0.025% sodium azide/thimerosal
UniProt	P20151
Localization	Cytoplasmic
Applications	Western Blot : 0.5-1ug/ml Immunohistochemistry (FFPE) : 2-5ug/ml
Limitations	This Kallikrein-2 antibody is available for research use only.



Western blot testing of Kallikrein-2 antibody and Lane 1: PANC; 2: HeLa; 3: 293T cell lysate. Predicted molecular weight: 17-29 kDa (multiple isoforms).



IHC-P: Kallikrein-2 antibody testing of human prostatic cancer tissue. HIER: boil tissue sections in pH8 EDTA for 20 min and allow to cool before testing.

Description

Kallikrein-2, also called KLK2, is a protein that in humans is encoded by the KLK2 gene, and is particularly associated with prostatic tissue. It is a member of glandular kallikrein gene family that comprises 25 to 30 highly homologous genes that encode specific proteases involved in the processing of biologically active peptides. An alternative KLK2 transcript, call KLK2-linked molecule (KLM), arises from the use of an alternate donor site within intron one. KLM shares only the N-terminal 15-amino acid signal peptide with the original KLK2 protein; the mature proteins display no similarity.

Application Notes

The stated application concentrations are suggested starting amounts. Titration of the Kallikrein-2 antibody may be required due to differences in protocols and secondary/substrate sensitivity.

Immunogen

An amino acid sequence from the C-terminus of human Kallikrein-2 (243-261aa YTKVVHYRKWIKDTIAANP) was used as the immunogen for this Kallikrein-2 antibody.

Storage

After reconstitution, the Kallikrein-2 antibody can be stored for up to one month at 4oC. For long-term, aliquot and store at -20oC. Avoid repeated freezing and thawing.