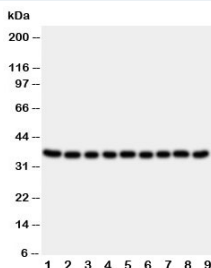


## Kallikrein 10 Antibody (R30919)

Catalog No.	Formulation	Size
R30919	0.5mg/ml if reconstituted with 0.2ml sterile DI water	100 ug

### Bulk quote request

<b>Availability</b>	1-3 business days
<b>Species Reactivity</b>	Human
<b>Format</b>	Antigen affinity purified
<b>Host</b>	Rabbit
<b>Clonality</b>	Polyclonal (rabbit origin)
<b>Isotype</b>	Rabbit IgG
<b>Purity</b>	Antigen affinity
<b>Buffer</b>	Lyophilized from 1X PBS with 2.5% BSA and 0.025% sodium azide/thimerosal
<b>UniProt</b>	O43240
<b>Applications</b>	Western Blot : 0.5-1ug/ml
<b>Limitations</b>	This Kallikrein 10 antibody is available for research use only.



Western blot testing of Kallikrein 10 antibody and lysate from 1: rat ovary; 2: rat testis; 3: rat spleen; 4: rat liver; 5: human 22RV; 6: human SROV; 7: human HeLa; 8: human MCF-7; 9: human MM231 cells. Predicted molecular weight ~37 kDa.

## Description

Kallikrein-related peptidase 10, also known as KLK10, PRSSL1 or NES1, belongs to the kallikrein subfamily of serine proteases, which are involved in a variety of enzymatic processes. Its encoded protein is secreted and may play a role in suppression of tumorigenesis in breast and prostate cancers. KLK10 contains 12 conserved cysteines in its protease domain that are expected to form 6 disulfide bonds, as in other serine proteases. RT-PCR detected variable levels of KLK10 expression in nearly all of the 35 adult and fetal tissues examined. The gene contains 6 exons, the first of which is noncoding. By fluorescence in situ hybridization, Polikoff et al.(1997) mapped the gene to 19q13.3. By genomic sequence analysis, Gan et al.(2000) mapped the gene within the KLK gene cluster on chromosome 19q13. This cluster includes 13

KLK genes and 5 pseudogenes.

## Application Notes

The stated application concentrations are suggested starting amounts. Titration of the Kallikrein 10 antibody may be required due to differences in protocols and secondary/substrate sensitivity.

## Immunogen

An amino acid sequence from the C-terminus of human Kallikrein 10 (SAQHPAVYTQICKY) was used as the immunogen for this Kallikrein 10 antibody.

## Storage

After reconstitution, the Kallikrein 10 antibody can be stored for up to one month at 4°C. For long-term, aliquot and store at -20°C. Avoid repeated freezing and thawing.