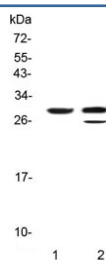


Kallikrein-1 Antibody (R30707)

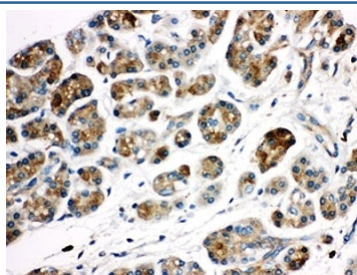
Catalog No.	Formulation	Size
R30707	0.5mg/ml if reconstituted with 0.2ml sterile DI water	100 ug

Bulk quote request

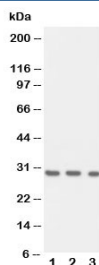
Availability	1-3 business days
Species Reactivity	Human, Mouse, Rat
Format	Antigen affinity purified
Host	Rabbit
Clonality	Polyclonal (rabbit origin)
Isotype	Rabbit IgG
Purity	Antigen affinity
Buffer	Lyophilized from 1X PBS with 2.5% BSA and 0.025% sodium azide/thimerosal
UniProt	P06870
Applications	Western Blot : 0.5-1ug/ml IHC (FFPE) : 0.5-1ug/ml
Limitations	This Kallikrein-1 antibody is available for research use only.



Western blot testing of 1) rat pancreas and 2) mouse pancreas with Kallikrein-1 antibody. Predicted molecular weight ~29 kDa.



IHC-P: Kallikrein-1 antibody testing of human pancreatic cancer tissue



Western blot testing of Kallikrein-1 antibody and Lane 1: recombinant human protein
10ng; 2: 5ng; 3: 2.5ng

Description

Kallikrein-1, also called KLK1 and KLKR, is a protein that in humans is encoded by the KLK1 gene. KLK1 is a member of the peptidase S1 family. It is a serine protease that generates Lys-bradykinin by specific proteolysis of kininogen-1. The gene is one of the fifteen kallikrein subfamily members located in a cluster on chromosome 19 and its exact cytogenetic location is 19q13.33. Mice lacking the protein are unable to generate significant levels of kinins in most tissues and develop cardiovascular abnormalities early in adulthood despite normal blood pressure. The protein is functionally conserved in its capacity to release the vasoactive peptide, Lys-bradykinin, from low molecular weight kininogen.

Application Notes

The stated application concentrations are suggested starting amounts. Titration of the Kallikrein-1 antibody may be required due to differences in protocols and secondary/substrate sensitivity.

Immunogen

An amino acid sequence from the middle region of human Kallikrein-1 (NDECKKAHVQKVTDPM) was used as the immunogen for this Kallikrein-1 antibody.

Storage

After reconstitution, the Kallikrein-1 antibody can be stored for up to one month at 4°C. For long-term, aliquot and store at -20°C. Avoid repeated freezing and thawing.