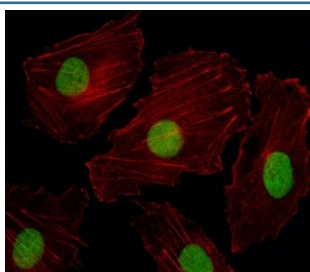


ISL2 Antibody (F44848)

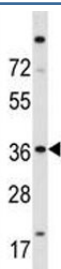
Catalog No.	Formulation	Size
F44848-0.4ML	In 1X PBS, pH 7.4, with 0.09% sodium azide	0.4 ml
F44848-0.08ML	In 1X PBS, pH 7.4, with 0.09% sodium azide	0.08 ml

[Bulk quote request](#)

Availability	1-3 business days
Species Reactivity	Human
Predicted Reactivity	Mouse, Rat
Format	Antigen affinity purified
Host	Rabbit
Clonality	Polyclonal (rabbit origin)
Isotype	Rabbit Ig
Purity	Antigen affinity
UniProt	Q96A47
Applications	Immunofluorescence : 1:10-1:50 Western Blot : 1:1000
Limitations	This ISL2 antibody is available for research use only.



Fluorescent image of HUVEC cells stained with ISL2 antibody. Alexa Fluor 488 secondary was used. Cytoplasmic actin was counterstained with Alexa Fluor 555 (red) conjugated Phalloidin. ISL2 immunoreactivity is localized to the nucleus.



ISL2 antibody western blot analysis in A2058 lysate

Description

ISL2 is a transcriptional factor that defines subclasses of motoneurons that segregate into columns in the spinal cord and select distinct axon pathways (By similarity).

Application Notes

Titration of the ISL2 antibody may be required due to differences in protocols and secondary/substrate sensitivity.

Immunogen

A portion of amino acids 1-30 from the human protein was used as the immunogen for this ISL2 antibody.

Storage

Aliquot the ISL2 antibody and store frozen at -20oC or colder. Avoid repeated freeze-thaw cycles.