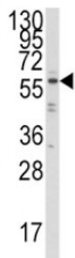


## IRF5 Antibody (F48241)

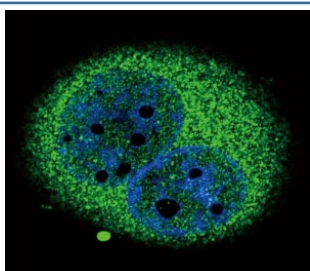
Catalog No.	Formulation	Size
F48241-0.4ML	In 1X PBS, pH 7.4, with 0.09% sodium azide	0.4 ml
F48241-0.08ML	In 1X PBS, pH 7.4, with 0.09% sodium azide	0.08 ml

[Bulk quote request](#)

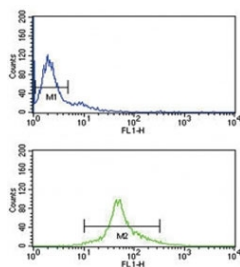
<b>Availability</b>	1-3 business days
<b>Species Reactivity</b>	Human
<b>Predicted Reactivity</b>	Bovine
<b>Format</b>	Purified
<b>Clonality</b>	Polyclonal (rabbit origin)
<b>Isotype</b>	Rabbit Ig
<b>Purity</b>	Purified
<b>UniProt</b>	Q13568
<b>Applications</b>	Western Blot : 1:1000 Immunofluorescence : 1:10-1:50 Flow Cytometry : 1:10-1:50
<b>Limitations</b>	This IRF5 antibody is available for research use only.



Western blot analysis of IRF5 antibody and Ramos lysate. Expected/observed molecular weight ~57 kDa.



Confocal immunofluorescent analysis of IRF5 antibody with A549 cells followed by Alexa Fluor 488-conjugated goat anti-rabbit IgG (green). DAPI was used as a nuclear counterstain (blue).



IRF5 antibody flow cytometry analysis of Ramos cells (green) compared to a negative control (blue). FITC-conjugated goat-anti-rabbit secondary Ab was used for the analysis.

## Description

IRF5 is a member of the interferon regulatory factor (IRF) family, a group of transcription factors with diverse roles, including virus-mediated activation of interferon, and modulation of cell growth, differentiation, apoptosis, and immune system activity. Members of the IRF family are characterized by a conserved N-terminal DNA-binding domain containing tryptophan (W) repeats.

## Application Notes

Titration of the IRF5 antibody may be required due to differences in protocols and secondary/substrate sensitivity.

## Immunogen

A portion of amino acids 81-108 from the human protein was used as the immunogen for this IRF5 antibody.

## Storage

Aliquot the IRF5 antibody and store frozen at -20oC or colder. Avoid repeated freeze-thaw cycles.