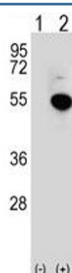


IRF4 Antibody (F42346)

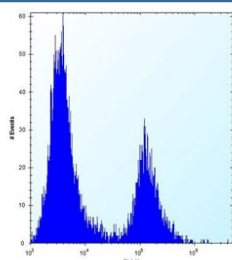
Catalog No.	Formulation	Size
F42346-0.4ML	In 1X PBS, pH 7.4, with 0.09% sodium azide	0.4 ml
F42346-0.08ML	In 1X PBS, pH 7.4, with 0.09% sodium azide	0.08 ml

[Bulk quote request](#)

Availability	1-3 business days
Species Reactivity	Human
Format	Purified
Host	Rabbit
Clonality	Polyclonal (rabbit origin)
Isotype	Rabbit Ig
Purity	Purified
UniProt	Q15306
Applications	Western Blot : 1:1000 Flow Cytometry : 1:10-1:50
Limitations	This IRF4 antibody is available for research use only.



Western blot analysis of IRF4 antibody and 293 cell lysate (2 ug/lane) either nontransfected (Lane 1) or transiently transfected (2) with the IRF4 gene. Predicted molecular weight: 51 kDa



IRF4 antibody flow cytometric analysis of 293 cells (right histogram) compared to a negative control (left histogram). FITC-conjugated goat-anti-rabbit secondary Ab was used for the analysis.

Description

The protein encoded by this gene belongs to the IRF (interferon regulatory factor) family of transcription factors, characterized by a unique tryptophan pentad repeat DNA-binding domain. The IRFs are important in the regulation of interferons in response to infection by virus, and in the regulation of interferon-inducible genes. This family member is lymphocyte specific and negatively regulates Toll-like-receptor (TLR) signaling that is central to the activation of innate and adaptive immune systems. A chromosomal translocation involving this gene and the IgH locus, t(6;14)(p25;q32), may be a cause of multiple myeloma. Alternatively spliced transcript variants have been found for this gene.

Application Notes

Titration of the IRF4 antibody may be required due to differences in protocols and secondary/substrate sensitivity.

Immunogen

A portion of amino acids 164-191 from the human protein was used as the immunogen for this IRF4 antibody.

Storage

Aliquot the IRF4 antibody and store frozen at -20oC or colder. Avoid repeated freeze-thaw cycles.