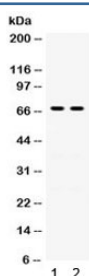


Involucrin Antibody (R31905)

Catalog No.	Formulation	Size
R31905	0.5mg/ml if reconstituted with 0.2ml sterile DI water	100 ug

Bulk quote request

Availability	1-3 business days
Species Reactivity	Human
Format	Antigen affinity purified
Host	Rabbit
Clonality	Polyclonal (rabbit origin)
Isotype	Rabbit IgG
Purity	Antigen affinity
Buffer	Lyophilized from 1X PBS with 2.5% BSA and 0.025% sodium azide
UniProt	P07476
Applications	Western Blot : 0.1-0.5ug/ml
Limitations	This Involucrin antibody is available for research use only.



Western blot testing of human 1) A431 and 2) A549 lysate with Involucrin antibody. Predicted molecular weight ~68 kDa but can be observed at up to ~140 kDa.

Description

Involucrin is a protein component of human skin and in humans is encoded by the IVL gene. It is a highly reactive, soluble, transglutaminase substrate protein present in keratinocytes of epidermis and other stratified squamous epithelia. It first appears in the cell cytosol, but ultimately becomes cross-linked to membrane proteins by transglutaminase thus helping in the formation of an insoluble envelope beneath the plasma membrane functioning as a glutamyl donor during assembly of the cornified envelope. Additionally, Involucrin is synthesised in the stratum spinosum and cross linked in the stratum granulosum by the transglutaminase enzyme that makes it highly stable. Thus it provides structural support to the cell, thereby allowing the cell to resist invasion by micro-organisms.

Application Notes

Optimal dilution of the Involucrin antibody should be determined by the researcher.

Immunogen

Amino acids QVQDIQPALPTKGEVLLPVEHQQQKQEVQWPPKHK of human Involucrin were used as the immunogen for the Involucrin antibody.

Storage

After reconstitution, the Involucrin antibody can be stored for up to one month at 4°C. For long-term, aliquot and store at -20°C. Avoid repeated freezing and thawing.