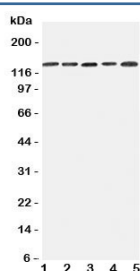


Integrin alpha 7 Antibody (ITGA7) (R31350)

Catalog No.	Formulation	Size
R31350	0.5mg/ml if reconstituted with 0.2ml sterile DI water	100 ug

Bulk quote request

Availability	1-3 business days
Species Reactivity	Human, Mouse, Rat
Format	Antigen affinity purified
Host	Rabbit
Clonality	Polyclonal (rabbit origin)
Isotype	Rabbit IgG
Purity	Antigen affinity
Buffer	Lyophilized from 1X PBS with 2.5% BSA and 0.025% sodium azide/thimerosal
UniProt	Q13683
Applications	Western Blot : 0.5-1ug/ml
Limitations	This Integrin alpha 7 antibody is available for research use only.



Western blot testing of Integrin alpha 7 antibody and Lane 1: 293T; 2: A431; 3: HeLa; 4: Jurkat; 5: Raji cell lysate. Expected/observed size ~129KD

Description

Integrin alpha 7 is a protein that in humans is encoded by the ITGA7 gene. This gene is mapped to 12q13.2. Integrins mediate a wide spectrum of cell-cell and cell-matrix interactions, and thus play a role in cell migration, morphologic development, differentiation, and metastasis. This protein functions as a receptor for the basement membrane protein laminin-1. It is mainly expressed in skeletal and cardiac muscles and may be involved in differentiation and migration processes during myogenesis. Defects in this gene are associated with congenital myopathy.

Application Notes

The stated application concentrations are suggested starting amounts. Titration of the Integrin alpha 7 antibody may be required due to differences in protocols and secondary/substrate sensitivity.

Immunogen

An amino acid sequence from the C-terminus of human ITGA7 (HAVKIPREDRQQFKEEK) was used as the immunogen for this Integrin alpha 7 antibody (100% mouse homology).

Storage

After reconstitution, the Integrin alpha 7 antibody can be stored for up to one month at 4°C. For long-term, aliquot and store at -20°C. Avoid repeated freezing and thawing.