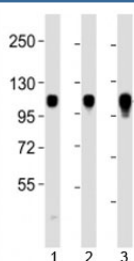


Integrin alpha 7 Antibody (F53359)

Catalog No.	Formulation	Size
F53359-0.4ML	In 1X PBS, pH 7.4, with 0.09% sodium azide	0.4 ml
F53359-0.08ML	In 1X PBS, pH 7.4, with 0.09% sodium azide	0.08 ml

[Bulk quote request](#)

Availability	1-3 business days
Species Reactivity	Human
Format	Antigen affinity purified
Host	Rabbit
Clonality	Polyclonal (rabbit origin)
Isotype	Rabbit Ig
Purity	Antigen affinity
UniProt	Q13683
Applications	Western Blot : 1:2000-8000
Limitations	This Integrin alpha 7 antibody is available for research use only.



Western blot testing of Integrin alpha 7 antibody at 1:2000 dilution. Lane 1: HeLa lysate; 2: Jurkat lysate; 3: Raji lysate

Description

Integrin alpha-7/beta-1 is the primary laminin receptor on skeletal myoblasts and adult myofibers. During myogenic differentiation, it may induce changes in the shape and mobility of myoblasts, and facilitate their localization at laminin-rich sites of secondary fiber formation. It is involved in the maintenance of the myofibers cytoarchitecture as well as for their anchorage, viability and functional integrity. Isoform Alpha-7X2B and isoform Alpha-7X1B promote myoblast migration on laminin 1 and laminin 2/4, but isoform Alpha-7X1B is less active on laminin 1 (In vitro). Acts as Schwann cell receptor for laminin-2. Acts as a receptor of COMP and mediates its effect on vascular smooth muscle cells (VSMCs) maturation (By similarity). Required to promote contractile phenotype acquisition in differentiated airway smooth muscle (ASM) cells.

Application Notes

Titration of the Integrin alpha 7 antibody may be required due to differences in protocols and secondary/substrate sensitivity.

Immunogen

This Integrin alpha 7 antibody was produced from a rabbit immunized with a KLH conjugated synthetic peptide between 1149-1181 amino acids from the C-terminal region of human ITGA7.

Storage

Aliquot the Integrin alpha 7 antibody and store frozen at -20oC or colder. Avoid repeated freeze-thaw cycles.