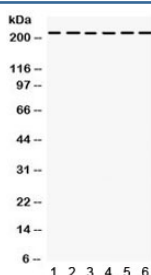


## Integrin alpha 4 Antibody / ITGA4 (R31960)

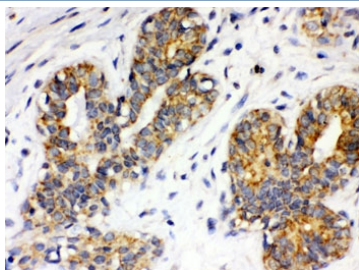
Catalog No.	Formulation	Size
R31960	0.5mg/ml if reconstituted with 0.2ml sterile DI water	100 ug

**Bulk quote request**

<b>Availability</b>	1-3 business days
<b>Species Reactivity</b>	Human, Rat
<b>Format</b>	Antigen affinity purified
<b>Host</b>	Rabbit
<b>Clonality</b>	Polyclonal (rabbit origin)
<b>Isotype</b>	Rabbit IgG
<b>Purity</b>	Antigen affinity
<b>Buffer</b>	Lyophilized from 1X PBS with 2.5% BSA and 0.025% sodium azide
<b>UniProt</b>	P13612
<b>Localization</b>	Cytoplasmic, membrane
<b>Applications</b>	Western Blot : 0.1-0.5ug/ml IHC (FFPE) : 0.5-1ug/ml
<b>Limitations</b>	This Integrin alpha 4 antibody is available for research use only.



Western blot testing of 1) rat liver, 2) rat kidney, human 3) Jurkat, 4) 22RV1, 5) HepG2, 6) SMMC lysate with Integrin alpha 4 antibody. Predicted molecular weight ~115 kDa, but may be observed at higher molecular weights due to glycosylation.



IHC testing of FFPE human breast cancer with Integrin alpha 4 antibody. HIER: Boil the paraffin sections in pH 6, 10mM citrate buffer for 20 minutes and allow to cool prior to staining.

## Description

ITGA4/Integrin alpha4 is an integrin alpha subunit. It makes up half of the alpha4beta1 lymphocyte homing receptor. The product of this gene belongs to the integrin alpha chain family of proteins. Integrins are heterodimeric integral membrane proteins composed of an alpha chain and a beta chain. This gene encodes an alpha 4 chain. Unlike other integrin alpha chains, alpha 4 neither contains an I-domain, nor undergoes disulfide-linked cleavage. Alpha 4 chain associates with either beta 1 chain or beta 7 chain. ITGA4 is also mapped to 2q31-q32 by fluorescence in situ hybridization.

## Application Notes

Optimal dilution of the Integrin alpha 4 antibody should be determined by the researcher.

## Immunogen

Amino acids MWKAGFFKRQYKSILQEENRRDSWSYINSK of human ITGA4 were used as the immunogen for the Integrin alpha 4 antibody.

## Storage

After reconstitution, the Integrin alpha 4 antibody can be stored for up to one month at 4°C. For long-term, aliquot and store at -20°C. Avoid repeated freezing and thawing.