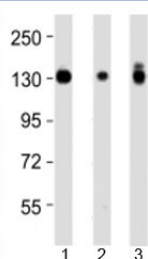


Integrin alpha 3 Antibody (F53345)

Catalog No.	Formulation	Size
F53345-0.4ML	In 1X PBS, pH 7.4, with 0.09% sodium azide	0.4 ml
F53345-0.08ML	In 1X PBS, pH 7.4, with 0.09% sodium azide	0.08 ml

[Bulk quote request](#)

Availability	1-3 business days
Species Reactivity	Human
Format	Antigen affinity purified
Host	Rabbit
Clonality	Polyclonal (rabbit origin)
Isotype	Rabbit Ig
Purity	Antigen affinity
UniProt	P26006
Applications	Western Blot : 1:2000-4000
Limitations	This Integrin alpha 3 antibody is available for research use only.



Western blot testing of Integrin alpha 3 antibody at 1:4000 dilution and 1) A431 lysate, 2) HeLa lysate, and 3) PC3 lysate at 1:2000. Expected molecular weight: 119-150 kDa depending on glycosylation level.

Description

Integrin alpha-3/beta-1 is a receptor for fibronectin, laminin, collagen, epiligrin, thrombospondin and CSPG4. Integrin alpha-3/beta-1 provides a docking site for FAP (seprase) at invadopodia plasma membranes in a collagen-dependent manner and hence may participate in the adhesion, formation of invadopodia and matrix degradation processes, promoting cell invasion. Alpha- 3/beta-1 may mediate with LGALS3 the stimulation by CSPG4 of endothelial cells migration.

Application Notes

Titration of the Integrin alpha 3 antibody may be required due to differences in protocols and secondary/substrate sensitivity.

Immunogen

This Integrin alpha 3 antibody was produced from a rabbit immunized with a KLH conjugated synthetic peptide between 165-199 amino acids from the N-terminal region of human ITGA3.

Storage

Aliquot the Integrin alpha 3 antibody and store frozen at -20oC or colder. Avoid repeated freeze-thaw cycles.