

## Insulin Antibody [clone 2D11-H5 (also called INS05)] (V2156)

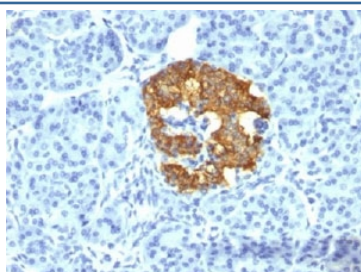
Catalog No.	Formulation	Size
V2156-100UG	0.2 mg/ml in 1X PBS with 0.1 mg/ml BSA (US sourced) and 0.05% sodium azide	100 ug
V2156-20UG	0.2 mg/ml in 1X PBS with 0.1 mg/ml BSA (US sourced) and 0.05% sodium azide	20 ug
V2156SAF-100UG	1 mg/ml in 1X PBS; BSA free, sodium azide free	100 ug
V2156IHC-7ML	Prediluted in 1X PBS with 0.1 mg/ml BSA (US sourced) and 0.05% sodium azide; *For IHC use only*	7 ml



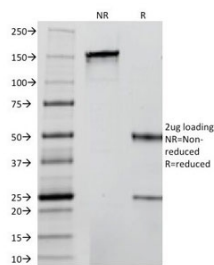
Citations (7)

[Bulk quote request](#)

Species Reactivity	Human
Format	Purified
Host	Mouse
Clonality	Monoclonal (mouse origin)
Isotype	Mouse IgG1, kappa
Clone Name	2D11-H5 (also called INS05)
Purity	Protein G affinity chromatography
Buffer	1X PBS, pH 7.4
Gene ID	3630
Localization	Cytoplasmic
Applications	Flow Cytometry : 0.5-1ug/million cells Immunofluorescence : 1-2ug/ml Immunohistochemistry (FFPE) : 0.1-0.2ug/ml for 30 min at RT
Limitations	This <b>Insulin antibody</b> is available for research use only.



IHC testing of human pancreas stained with Insulin antibody (2D11-H5). Note cytoplasmic staining of cells.



SDS-PAGE Analysis of Purified, BSA-Free Insulin Antibody (clone 2D11-H5 or INS05).  
Confirmation of Integrity and Purity of the Antibody.

## Description

This antibody recognizes a polypeptide which is identified as insulin, a 51-amino acid polypeptide composed of A and B chains connected through the C-peptide. Proinsulin, which has very little biological activity, is cleaved by proteases within its cell of origin into the insulin molecule and the C-terminal basic residue. Insulin enhances membrane transport of glucose, amino acids, and certain ions. It also promotes glycogen storage, formation of triglycerides, and synthesis of proteins and nucleic acids. Deficiency of insulin results in diabetes mellitus. The main storage site for insulin is the pancreatic islets. antibody to insulin is an important beta-cell and insulinoma marker.

## Application Notes

The concentration stated for each application is a general starting point. Variations in protocols, secondaries and substrates may require the antibody to be titrated up or down for optimal performance.

1. No special pretreatment is required for staining of formalin/paraffin tissues.
2. The prediluted format is supplied in a dropper bottle and is optimized for use in IHC. After epitope retrieval step (if required), drip mAb solution onto the tissue section and incubate at RT for 30 min.

## Immunogen

Full length purified pig Insulin (aa 1-84) was used as the immunogen for this antibody.

## Storage

Store the Insulin antibody at 2-8°C (with azide) or aliquot and store at -20°C or colder (without azide).

## Alternate Names

IDDM2, ILPR, IRDN, MODY10, Proinsulin, Insulin antibody

## References (2)